



FS-C5100DN/FS-C5200DN/FS-C5300DN
FS-C5350DN/FS-C5400DN

Printer Driver

User Guide



Legal Notes

Unauthorized reproduction of all or part of this guide is prohibited.

The information in this guide is subject to change for improvement without notice.

We cannot be held liable for any problems arising from the use of this product, regardless of the information herein.

Regarding Trademarks

Microsoft Windows is a registered trademark of Microsoft Corporation in the U.S. and/or other countries. KPDL is a trademark of Kyocera Corporation. PCL is a trademark of Hewlett-Packard Company. TrueType is a registered trademark of Apple Computer, Inc.

All other brand and product names herein are registered trademarks or trademarks of their respective companies

Examples of the operations given in this guide support the Windows XP printing environment. Essentially the same operations are used for Microsoft Windows Vista, Windows Server 2008 and Windows 2000 environments.

User Interface screen captures shown in this guide may differ depending on your printing device.

Model supported by the KX printer driver

FS-C5100DN

FS-C5200DN

FS-C5300DN

FS-C5350DN

FS-C5400DN

Table of Contents

Chapter 1 Installation

Preparing to Install the Driver	1-1
Installing Utilities	1-2
Upgrading Driver Components	1-2
Express Installation	1-2
Installing on Windows Vista and Windows XP	1-2
Custom Installation	1-4
Installing on Windows Vista and Windows XP with a USB Connection	1-4
Installing on Windows Vista and Windows XP with a Network Connection	1-5
Optional Printer Components	1-7
Installing Optional Printer Components	1-7
The Add Printer Wizard	1-7
Installing on Windows Vista	1-7
Installing on Windows XP and Windows 2000	1-8
Printer Driver Settings Access	1-8
Changing the Default Driver Settings	1-8

Chapter 2 Device Settings

Accessing the Device Settings Tab	2-1
Device Options	2-2
Setting Device Options	2-2
Setting up Custom Boxes	2-2
Auto Configure	2-3
Enabling Auto Configuration	2-3
Memory	2-4
Setting the Memory	2-4
RAM Disk	2-4
Setting RAM Disk	2-4
Administrator Settings	2-5
Job Accounting	2-5
Show Quick Print Tab	2-6
Color Page Count	2-6
Black & White Mode	2-7
Lock Security Settings	2-7
Administrator Password	2-7
SNMP	2-7
User Settings	2-9
Identification	2-9
Units	2-9
Language Preference	2-9
PDL (Page Description Language)	2-10
PDL Options	2-10
PDF	2-11
Windows Vista XPS Driver	2-14
Compatibility Settings	2-14
Media Source Enumeration	2-14

Ignore Application Collation	2-14
Combine Source and Media Type Lists	2-15

Chapter 3 Quick Print

Quick Print Options	3-1
Specifying Print Options	3-1
Color Mode	3-2
Collation	3-2
Duplex Printing	3-2
Multiple Pages per Sheet	3-3
Profile Options	3-3
Selecting Profiles	3-3
Saving a Profile	3-3
Editing a Profile	3-4
Deleting a Profile	3-4
Importing a Profile	3-4
Exporting a Profile	3-5

Chapter 4 Basic

Basic Paper Settings	4-1
Source and Media Types	4-2
Print Size and Page Size	4-2
Creating a Custom Page Size	4-3
Printing with Custom Size Pages	4-3
Duplex Printing	4-3
Printing in Duplex Mode	4-4
Collation	4-4
Printing Collated Documents	4-4
Printing in Color, Black & White, and EcoPrint	4-5
Kyocera Logo	4-5
Displaying Version Information	4-5
Displaying Plug-in Information	4-5

Chapter 5 Layout

Booklet	5-1
Printing a Booklet	5-1
Multiple Pages per Sheet	5-2
Printing Multiple Pages per Sheet	5-2
Poster	5-2
Printing a Poster	5-3
Scaling	5-3
Setting Scaling on the Page	5-4
Gutter	5-4
Creating a Gutter	5-4

Chapter 6 Imaging

Print Quality, EcoPrint, and Gloss Mode	6-1
Selecting Print Quality	6-2
Trapping	6-2
Setting Trapping Values	6-2
Fonts	6-2
Font Settings	6-3
Selecting Font Settings	6-3
Font Substitution	6-3
Disable Device Fonts	6-4

Graphics	6-4
Pattern Scaling	6-4
Inversion Settings	6-5
Optimization Settings	6-5
CIE Optimization	6-5
Color Mode	6-6
Printer Profile	6-6
Color Correction	6-7
Selecting Color Correction	6-7
Setting a Default Color Profile in Windows XP	6-7
Setting a Default Color Profile in Windows Vista	6-8
Adjusting Color	6-9
Adjusting HSL (Hue, Saturation, Lightness)	6-9
Adjusting RGB (Red, Green, Blue)	6-10
Adjusting Grayscale	6-10
Text and Graphics Effects	6-10

Chapter 7 Publishing

Cover Mode	7-1
Printing Covers	7-1
Cover Mode Options	7-2
Choosing Cover Media	7-5
Page Insert	7-5
Printing Page Inserts	7-5
Page Insertion Options	7-6
Transparency Interleaving	7-6
Interleaving Transparencies	7-7

Chapter 8 Job

Job Storage (e-MPS)	8-1
Job Storage (e-MPS) options	8-2
Custom Box	8-2
Storing a Job in a Custom Box	8-2
Quick Copy	8-3
Printing a Quick Copy Job	8-3
Proof and Hold	8-4
Printing a Proof and Hold Job	8-4
Private Print	8-4
Storing a Private Print Job	8-5
Job Storage	8-5
Storing a Job Storage Job	8-5
Job Name	8-6
Don't Use Application Name	8-6
Overwrite Job Name	8-6
Selecting a Job Name	8-6

Chapter 9 Advanced

Prologue/Epilogue	9-1
Selecting a Prologue/Epilogue File	9-2
Editing a Prologue/Epilogue File	9-2
Deleting a Prologue/Epilogue File	9-2
Assigning a Prologue/Epilogue File	9-2
Unassigning a Prologue/Epilogue File	9-2
Specifying the Insertion Point	9-3
Watermark	9-3

Adding or Editing a Watermark	9-4
Page Selection for Watermark	9-5
Security Watermark	9-5
Adding or Editing a Security Watermark	9-6
Adjusting Security Watermark Calibration	9-7
Page Selection for Security Watermark	9-8
Locking the Security Watermark Settings	9-8
Color Optimizer	9-9
Optimizing RGB Color for Printing	9-9
Configuring Status Monitor	9-10
Setting Status Monitor Preferences	9-11
EMF Spooling	9-12
Enabling Client Profile	9-12

Chapter 10 Profiles

Saving a Profile	10-1
Editing a Profile	10-2
Deleting a Profile	10-2
Importing a Profile	10-2
Exporting a Profile	10-3

Glossary	v
-----------------------	---

1 Installation

A printer driver is an application that manages communication between a printer and your computer. Once installed, the printer driver settings must be configured in the printer **Properties** and **Printing Preferences**.

Note: In Windows Vista, Windows XP, and Windows 2000, you must be logged in with administrator rights to install the printer driver. If you connect a USB (Universal Serial Bus) cable before printer driver installation, it is strongly recommended that you cancel the Found New Hardware Wizard and install the software through the **Product Library CD** menu. Browsing the CD and installing each driver separately is not recommended.

Preparing to Install the Driver

This section describes the initial steps to take before you install the printer driver, and based on your operating system, the next procedure you can follow.

- 1** Turn on the computer and the printer. If you have a USB connection, the Windows **Found New Hardware Wizard** appears. Click **Cancel**.
- 2** Insert the **Product Library CD** into the CD drive.
After the installation wizard begins, the **Main Menu** appears.

Note: If the **Product Library** fails to start after inserting the **Product Library CD** into the CD drive, use Windows Explorer to locate **Setup.exe** on the local drive and double-click to open.

- 3** Click **View License Agreement** to read the license agreement.
- 4** Click **Accept** to proceed.

- 5 To begin the installation, click **Install Software**.

Note: If the **Windows Security** warning dialog box appears at any point during the installation process, click **Install this driver software anyway**.

- 6 The **Installer** wizard appears.

The installation differs based on your operating system and connection method. Select your operating system and connection method from the following list and proceed to the reference page to continue the installation.

Express Installation

Installing on Windows Vista and Windows XP on page 1-2

Custom Installation

Installing on Windows Vista and Windows XP with a USB Connection on page 1-4

Installing on Windows Vista and Windows XP with a Network Connection on page 1-5

Note: **KPrint** installs a client port monitor that lets Windows TCP/IP print from any network card connected to a printing system. KPrint supports LPR and IPP printing. For the KPrint Installation instructions, refer to your **Product Library CD**. **KPrint** uses a stand-alone installer.

Installing Utilities

On the **Installation Method** screen, click **Utilities** to install printer utilities. You can also select utilities to install during the **Custom Installation** procedure.

Upgrading Driver Components

If the installation wizard detects older driver or utility components, the **Software Component Upgrade** page appears.

- 1 Choose the component to upgrade. Click **Next**.
- 2 Confirm your upgrade settings. To start the upgrade, click **Upgrade**.
- 3 When the upgrade completes, click **Next**. The **Installation Method** page appears.

Express Installation

Express Mode applies to driver installation for a USB or network connection only. The installation wizard discovers printers that are turned on, and connected by USB and network cable. In **Custom Mode**, you are able to select the installation packages and specify the port.

Installing on Windows Vista and Windows XP

This section describes the express installation procedure of the driver software on Windows Vista and Windows XP.

- 1 Ensure that your printer and computer are turned on and connected by USB or network cable.

Note: If the **Found New Hardware Wizard** dialog box appears during the installation process, click **Cancel**. If the **Hardware Installation** warning dialog box appears, click **Continue Anyway**.

- 2 On the **Installation Method** page, click **Express Mode**.
- 3 The **Discover Printing System** page opens to search for your printer. If Discover does not find your printing system, a message appears. Remove and reinsert the USB or network cable, and ensure it is connected properly. Click **Refresh** to retry the discovery. If the system still cannot find your printer, contact your system administrator.

If Discovery finds your printer, click the printer name to select it.

- 4 Select **Use host name for port name** to use a host name for the Standard TCP/IP port. If the installation wizard still displays the IP address, contact your system administrator. *(Not available with a USB connection.)*
- 5 Click **Information** if you want to open a dialog box with details about IP Address, Host Name, Printer Model, Contact, Location, and Serial Number. Click **OK**. Click **Next**. *(Not available with a USB connection.)*
- 6 On the **Printer Settings** page, you can assign a name to the printing system. You can also choose to share this printer with others or set this printer as the default printer. Make your selections, and then click **Next**.
- 7 On the **Confirm Settings** page, click **Install** if the settings are correct. Click **Back** to correct the settings.

- 8 The **Installation Completed** page appears displaying the following driver options.

Print a test page

This selection verifies a connection with the printer and creates a print out of the installed driver components.

Show Quick Print Tab

This selection lets you define basic print options into group profiles that can be accessed easily. The **Show Quick Print tab** option also appears in the **Administrator Settings** in the **Device Settings** tab.

Enable Status Monitor

The **Status Monitor** displays system status messages on your computer screen during printing tasks. The **Status Monitor** button appears on the **Advanced** tab.

Device Settings

Select **Device Settings** to open the **Device Settings** tab where you can choose installed options for your printing system. (In **Windows Vista**, or with a USB connection, the **Device Settings** check box is not displayed).

When the installation completes successfully, click **Finish** to exit the installation wizard and return to the **Product Library CD** menu.

Software installation failures generate the following message:

```
One or more software installations have failed.
```

Click **Finish**, and retry the installation. If the same message appears again, contact your system administrator.

The installation of the printer is now complete. If prompted, restart your computer.

Custom Installation

Custom Mode is an option to install utilities. You can specify the printer port, fonts, and the utilities you want to install.

Printer drivers that ship with Windows operating systems are called minidrivers. The minidriver is available separately for PCL and KPDLL and provides basic support for your printer. Minidriver functionality is not documented in this user guide.

Installing on Windows Vista and Windows XP with a USB Connection

This section describes the custom installation procedure of the driver software on Windows Vista and Windows XP using a USB connection.

- 1 Ensure that your printer and computer are turned on and connected using a USB cable.

Note: If the **Found New Hardware Wizard** dialog box appears during the installation process, click **Cancel**. If the **Hardware Installation** warning dialog box appears, click **Continue Anyway**.

- 2 On the **Installation Method** page, select **Custom Mode**.
- 3 The **Discover Printing System** page appears displaying **Discover** selected. You can use this option, or the **Custom select** option.

With the **Discover** option, you can let the system find all the devices available for driver installation. If you use this option, proceed to step 4.

With the **Custom select** option, you can choose the printing system and printer port to install. Proceed to step 6.

If **Discover** does not find your printing system, a message appears. Ensure that your printer is properly connected by the correct cable and is turned on, and then close the message box. Remove and reinsert the USB cable to your computer and retry the discovery. Contact your system administrator if the system cannot find your printer.
- 4 If **Discover** finds one or more USB printing systems, select your model from the list. Click **Next**.
- 5 On the **Custom Installation** page, select the driver and software packages you want to install from the **Driver** and **Utility** tabs, and clear those not intended for installation. Click **Next**. Proceed to step 10.
- 6 On the **Printing System** page, select your model, and then click **Next**.

- 7 On the **Printer Port** page, select the port connected to your printing system.
- 8 On the **Custom Installation** page, select the driver and software packages you want to install from the **Driver** and **Utility** tabs, and clear those not intended for installation. Click **Next**.
- 9 On the **Printer Settings** page, you can assign a name for the printing system. This name appears in Windows **Printers and Faxes** and in the **Print** dialog box in applications. You can also choose to share this printer with others or set this printer as the default printer. Make your selections, and then click **Next**.
- 10 On the **Confirm Settings** page, click **Install** if the settings are correct. Click **Back** to correct the settings.
- 11 The **Installation Completed** page appears displaying the installation details.

Print a test page

This selection verifies a connection with the printer and creates a print out of the installed driver components.

Show Quick Print Tab

This selection lets you define basic print options into group profiles that can be accessed easily. The **Show Quick Print tab** option also appears in the **Administrator Settings** in the **Device Settings** tab.

Enable Status Monitor

The **Status Monitor** displays system status messages on your computer screen during printing tasks. The **Status Monitor** button appears on the **Advanced** tab.

Device Settings

Select **Device Settings** to open the **Device Settings** tab where you can choose installed options for your printing system. (In **Windows Vista**, or with a USB connection, the **Device Settings** check box is not displayed).

When the installation completes successfully, click **Finish** to exit the installation wizard and return to the **Product Library CD** menu.

Software installation failures generate the following message:

```
One or more software installations have failed.
```

Click **Finish**, and retry the installation. If the same message appears again, contact your system administrator.

The installation of the printer is now complete. If prompted, restart your computer.

Installing on Windows Vista and Windows XP with a Network Connection

This section describes the custom installation procedure of the driver software on Windows Vista and Windows XP using a Network connection.

- 1 Ensure that your printer and computer are connected to a network.
- 2 On the **Installation Method** page, select **Custom Mode**.

- 3 The **Discover Printing System** page appears displaying **Discover** selected. For an **Express Installation**, you can let **Discover** find your printing system, and proceed with the steps in Express Installation. Otherwise, you can choose **Custom select**, and click **Next** to continue with a custom installation.
- 4 On the **Printing System** page, select the model, and then click **Next**.
- 5 On the **Printer Port** page, select the port connected to your printing system, or add a port connected to your system by clicking **Add Port**. Click **Next**.
- 6 On the **Custom Installation** page, select the driver and software packages you want to install from the **Driver** and **Utility** tabs, and clear those not intended for installation. Click **Next**.
- 7 On the **Printer Settings** page, you can assign a name for the printing system. This name appears in Windows **Printers and Faxes** and in the **Print** dialog box in applications. You can also choose to share this printer with others or set this printer as the default printer. Make your selections, and then click **Next**.
- 8 On the **Confirm Settings** page, click **Install** if the settings are correct. Click **Back** to correct the settings.
- 9 The **Installation Completed** page appears displaying the installation details.

Print a test page

This selection verifies a connection with the printer and creates a print out of the installed driver components.

Show Quick Print Tab

This selection lets you define basic print options into group profiles that can be accessed easily. The **Show Quick Print tab** option also appears in the **Administrator Settings** in the **Device Settings** tab.

Enable Status Monitor

The **Status Monitor** displays system status messages on your computer screen during printing tasks. The **Status Monitor** button appears on the **Advanced** tab.

Device Settings

Select **Device Settings** to open the **Device Settings** tab where you can choose installed options for your printing system. (In **Windows Vista**, or with a USB connection, the **Device Settings** check box is not displayed).

When the installation completes successfully, click **Finish** to exit the installation wizard and return to the **Product Library CD** menu.

Software installation failures generate the following message:

One or more software installations have failed.

Click **Finish**, and retry the installation. If the same message appears again, contact your system administrator.

The installation of the printer is now complete. If prompted, restart your computer.

Optional Printer Components

You can expand the functionality of your printer driver by installing optional components from the **Product Library CD > Advanced Tools** menu.

Installing Optional Printer Components

- 1** On the **Product Library CD** menu, select **Advanced Tools**.
- 2** On the **Advanced Tools** page, select **Optional Printer Components**.
- 3** Select a printer, and click **Next** to install optional components.
- 4** On all **Select** pages, choose your components, and click **Next**.
- 5** On the **Confirm Settings** page, if the displayed settings are correct, click **Install**. Click **Back** to correct any settings.
- 6** The **Printer Components Installation Completed** page appears. Click **Finish**.
When you have completed installing printers and optional components, if prompted, restart your computer.

The Add Printer Wizard

The **Add Printer Wizard** displays a series of screens that guide you through printer installation. You are prompted to make installation choices on each screen.

Installing on Windows Vista

This section describes how to install a printer driver using the **Add Printer Wizard** in Windows Vista.

- 1** Click the **Start** icon in the Windows taskbar at the bottom of the screen.
- 2** In the **Start** window, click **Control Panel**.
- 3** In the **Control Panel**, click **Printers**.
- 4** In the **Printers** window toolbar, click **Add a printer**.
- 5** The **Add Printer Wizard** appears. The wizard provides you with step by step driver installation instructions. Click either **Add a local printer** or **Add a network, wireless or Bluetooth printer**. Follow the instructions on each page, then click **Next** to proceed to the next page.

Note: If the **Windows Security** warning dialog box appears, click **Install this driver software anyway**.

- 6** The last page of the wizard appears with a message that you've successfully added the printer you selected. Installation of the printer driver is now complete.

Click **Print a test page** if you want to produce sample print output from the newly installed printer. To close the **Add Printer Wizard**, click **Finish**.

Installing on Windows XP and Windows 2000

This section describes how to install a printer driver using the **Add Printer Wizard** on Windows XP and Windows 2000.

- 1 Click **Start** in the Windows taskbar, and click **Control Panel**.
- 2 Click **Printers and Faxes** to open the **Printers and Faxes** window.
- 3 Click **Add a printer** in the window area on the left.

Note: The **Add Printer Wizard** can also be started by clicking **Add printer** in the File menu of the **Printers and Faxes** window.

- 4 The **Add Printer Wizard** appears. The wizard provides you with step by step driver installation instructions. Follow the instructions on each page, and then click **Next** to proceed to the next page.

Note: If the **Found New Hardware Wizard** page appears, click **Cancel**. If the **Hardware Installation** warning dialog box appears, click **Continue Anyway**.

- 5 When the **Completing the Add Printer Wizard** page appears, installation of the printer driver is now complete. To close the **Add Printer Wizard**, click **Finish**. If prompted, restart your computer.

Printer Driver Settings Access

The printer driver software can be accessed from the **Print** dialog box of an application, or from **Start**. If accessed from an application, then changes made to driver settings remain in effect until the application ends. If accessed from **Start**, changes are maintained as the default printer settings.

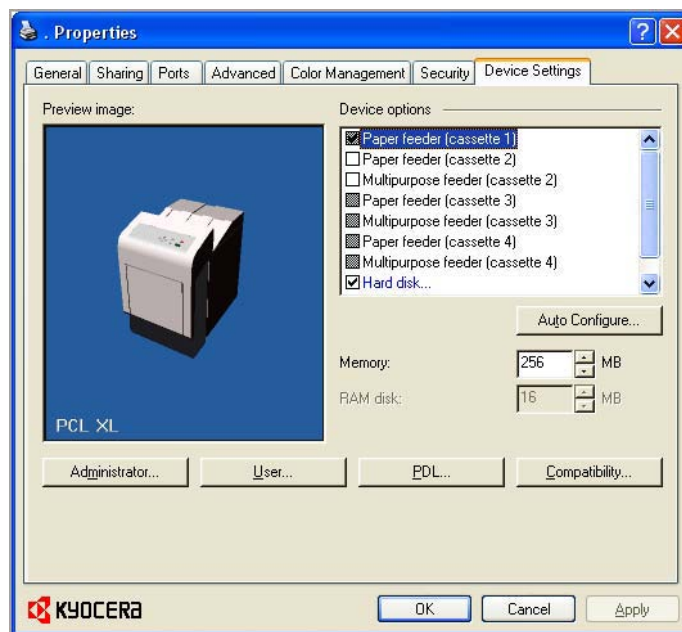
Changing the Default Driver Settings

The **Reset** button is only available when you access **Preferences** or **Properties** from the **Print** dialog box of an application. Default driver settings apply to printing jobs initiated from any application, but they are overridden by setting changes made within each application.

- 1 Click **Start**, then click **Control Panel** and double-click **Printers** (Windows Vista), or **Printers and Faxes** (Windows XP).
- 2 Right-click on your printing system icon.
- 3 Click **Printing Preferences**.

2 Device Settings

In the **Device Settings** tab you can select installed printing system options so the associated features can be used with the printer driver. You can also match the memory setting in the driver with the memory installed in your printing system, which lets the driver manage font downloads more efficiently. Administrator, User, PDL (Page Description Language), and Compatibility settings can also be selected.



Accessing the Device Settings Tab

The **Device Settings** tab can be accessed from the **Printers** (Windows Vista), or **Printers and Faxes** (Windows XP) folder.

- 1 Click **Start**, then click **Control Panel** and double-click **Printers** (Windows Vista), or **Printers and Faxes** (Windows XP).
- 2 Right-click the printer icon, and click **Properties**.
- 3 Click the **Device Settings** tab.

Device Options

Optional devices extend the capabilities of your printing system for source and job storage.

In a client/server environment, this feature is unavailable to a client logged in as a restricted user.

Setting Device Options

You can set the printer driver to match the optional devices installed on your printing system.

- 1 In the **Printer Properties** dialog box, click the **Device Settings** tab.
- 2 In **Device Settings > Device options**, select the check boxes for all installed devices.

Setting up Custom Boxes

You can create up to 1000 custom boxes for storing print jobs. Custom boxes can be assigned to users who can print the jobs later from the printing system's operation panel.

Note: **Custom box** is not available for some models.

- 1 In the **Device Settings** tab, select **Hard disk**. Or if already selected, double-click **Hard disk**.
- 2 In the **Hard Disk Settings** dialog box, click **Add**.
A new **Box number** and **Box name** appear in the **Defined custom boxes** list.
- 3 In the **Defined custom boxes** list, a new **Box number** and **Box name** appear. If desired, change the number and name in the **Box number** and **Box name** boxes. The number must be within a range of 1 to 1000, and the name length can be up to 32 characters. You can also type a user name up to 20 characters.

Note: **Shared box** is selected by default, to enable all network users to save jobs in the box.

- 4 To require users of a shared box to type a password before printing, select **Require password**, and type a password up to 16 characters.
- 5 Click **OK** in the **Hard Disk Settings** and **Properties** dialog boxes.
The new custom box appears in the **Custom Box** dialog box when printing.

You can remove a custom box by selecting it in the **Defined custom boxes** list and clicking **Delete**.

You can import a custom box list by clicking **Import** and browsing for a valid custom box list file (.CSV or .KXU).

You can save the current custom box list (.CSV or .KXU) in your computer or network by clicking **Export**. A saved list can be imported into another printer driver.

Auto Configure

Auto Configure detects the devices installed on the printing system if it is connected over a network. When your computer is connected to the printing system through a TCP/IP port, the **Auto Configure** button appears in the **Device Settings** tab. **Auto Configure** updates the **Device options** list and preview images to keep the printer driver consistent with the printing system configuration.

Not all installed devices are detected by using **Auto Configure**. Before selecting **OK** in the **Device Settings** tab, check the settings to make sure that they are correct.

Note: The default setting for Windows XP Service Pack 2 is for the Windows Firewall to be set to **On**. The setting can be changed to allow communication between the printing system and your computer. In the Windows **Security Alert** dialog box, click **Unblock**.

Silent Auto Configure

Silent Auto Configure checks the printing system every 10 minutes for changes in optional devices or memory. When a change is detected, the driver is automatically updated with the new settings. **Silent Auto Configure** is available only for Windows Vista OS for printing systems connected to a network.

In a client/server environment, this feature is unavailable to a client logged in as a restricted user.

Enabling Auto Configuration

The **Auto Configure** button can be used to detect all available device options when the printing system is connected to a network through a TCP/IP port.

- 1 Verify that all optional devices are attached to the printing system, and that it is turned on and ready to print.
- 2 In the **Device Settings** tab, click **Auto Configure**.

In Windows 2000 and Windows XP, the driver settings are updated immediately.

In Windows Vista, the **Auto Configure** dialog box opens. Select from Auto configure options:

Auto Configure Now

Click the button at any time to retrieve the current settings from the printing system. It is recommended to do this when the driver is first installed and when **Silent auto configuration** is turned off.

Silent auto configuration

Select to let the driver check the printing system every 10 minutes for any changes in optional devices or memory. When a change is detected, the driver is automatically updated with the new settings.

Memory

Memory is the amount of standard and optional memory installed in the printing system. To maximize the downloading of printing system fonts, the driver must be set to match the total printing system memory.

Setting the Memory

By default, the **Memory** setting matches the standard memory in the printing system. If optional memory is installed, set the memory in the printer driver to match the total amount of memory.

- 1 Install optional DIMM memory in the printing system.
- 2 In **Device Settings**, at the **Memory** text box, select the amount of total installed memory by clicking the up and down arrows until the text box shows the correct number of megabytes (MB).

You can use the **Auto Configure** feature to obtain memory information from the printing system.

RAM Disk

If a hard disk is not installed, the RAM disk functions as a virtual hard disk, saving print requests into the printing system's memory. Because the RAM disk is volatile memory, all data sent to the printing system is lost when the power is turned off.

Note: When a hard disk is installed, the RAM disk feature is inactive.

Selecting **Ignore application collation** in the **Compatibility Settings** dialog box lets the driver control collation. RAM disk can then increase the print speed of collated multiple copies by sending the print job just once.

In a client/server environment, this feature is unavailable to a client logged in as a restricted user.

Setting RAM Disk

If a hard disk is not installed, you can set the RAM disk to save print requests into the printing system's memory.

- 1 In **Device Settings**, in the **Device options** list, select **RAM disk**.
- 2 At the **RAM disk** text box, type or select the size of the RAM disk by clicking the up and down arrows until the text box shows the correct number of megabytes (MB).
- 3 At the printing system's operation panel, turn on RAM disk and set its size.

The maximum RAM disk size depends on the amount of installed memory.

Administrator Settings

Administrator Settings lets you specify **Job accounting** IDs, display the **Quick Print** tab, choose a **Color page count**, a **Black & White mode**, select **Lock Security Settings**, select **SNMP** settings, and set a password to control access.

In a client/server environment, this feature is unavailable to a client logged in as a restricted user.

Job Accounting

Job accounting gives an administrator control usage of a printing system. With **Job accounting**, you can assign account IDs (identification numbers) to users or departments, a specific account ID, or make account ID input mandatory for printing. After account IDs are created, you can view from the printing system operation panel the number of copies associated with a specific ID as well as limit the number of copies for individual IDs. Account IDs can be up to 8 digits.

Note: **Job accounting** must be set to **On** at the printing system. A maximum of 100 account IDs can be assigned at the printing system and stored in the printer driver.

Job Accounting Options

Job accounting supports the following options:

Use specific account ID

Select this option to track the print jobs of a user or group with an account ID. It will send the account ID with each print job. An administrator can restrict a user or group from changing their account ID by using the **Password protect administrator settings** in the **Administrator Settings** dialog box.

Prompt for account ID

Select this option to track the print jobs of a user or group with an account ID as well as prompt for an account ID. At the time a print job is sent, the user will be prompted to enter a Job Accounting ID.

Prompt for account ID and validate

Select this option to prompt for an account ID that is saved in the driver. When sending a print job, type an account ID when prompted, then click **OK** to print. The account ID is validated against the account ID list. If typed incorrectly, you will be prompted to type it again.

Display account ID list

Select this option to display the account ID list at the time of printing. The print job can be assigned to a user or group. The account ID list is stored in the driver and more than one ID must be established for the list to appear.

Account ID List

Select this option to display the account ID to manage the Account ID list. Add, edit or delete account IDs from the list stored in the driver. Account IDs descriptions match the user or group with an account ID. After an account ID list is created, the list can be exported as a group by saving it as a text file (.CSV). To import an account ID list, browse for an existing list and open it.

Printing with Job Accounting

After account IDs are assigned and Job accounting is set to **On** at the printing system, the number of pages printed is added to the selected account ID total.

- 1 In the **Device Settings** tab, click **Administrator**.

- 2 In the **Administrator Settings** dialog box, select **Job accounting**.
- 3 Select a **Job accounting** option:
 - Use specific account ID**
 - Prompt for account ID**
 - Prompt for account ID and validate**
 - Display account ID list**
- 4 Select **Account ID List** to create and manage account ID lists.
- 5 Click **OK** in all dialog boxes.
- 6 Print the document from the application.
- 7 For some options, when the **Print Options** dialog box appears, type or select an account ID, and click **OK**.

Show Quick Print Tab

This option lets you control the display of the **Quick Print** tab. You can define basic print options into group profiles that can be accessed quickly and easily.

With a cleared **Show Quick Print tab** check box, the tab does not appear in the **Printing Preferences** dialog box.

With a selected **Show Quick Print tab** check box, the tab appears in the **Printing Preferences** dialog box. When you select the **Show Quick Print tab** check box, you can also access the other two check boxes, **Hide other tabs**, and **Set Quick Print tab as default**.

Selecting **Hide other tabs** displays only the **Quick Print** tab to the user.

Selecting **Set Quick Print tab as default** opens to this tab when you access **Printing Preferences**.

Color Page Count

Color page count records color and black and white pages in each print job. This tracking feature can be used by billing or accounting applications. Optional third party accounting software can read and process the print information embedded in each page.

It tracks output using the following method:

A page with any color is counted as a color page.

A page with black only is counted as a black and white page.

A blank page is counted as a black and white page.

Accessing Color Page Count

Color page count records the number of color and black and white pages in each print job. It embeds the count information in the document.

- 1 In the **Device Settings** tab, click **Administrator**.
- 2 Select **Color page count**.

Black & White Mode

Black & White mode disables all color settings in the driver's **Imaging** tab and prints with black toner only.

To enable this feature, open **Device Settings** and click **Administrator > Black & White mode**.

Lock Security Settings

If the **Security Watermark** plug-in is installed, **Lock Security Settings** appears in the **Administrator Settings** dialog box. The administrator can ensure that a security watermark is printed on all jobs by locking this feature.

Administrator Password

You can set **Password protect administrator settings** in the **Administrator Settings** dialog box to prevent unauthorized changes in this dialog box. When selected, this setting will prompt you to enter a password and confirm the password. This password protection blocks access to the **Job accounting**, **SNMP Settings**, **Show Quick Print tab**, **Color page count**, **Lock Security Settings**, and **Black & White mode** settings.

Setting the Administrator Password

- 1 In **Device Settings > Administrator Settings**, select **Password protect administrator settings**.
- 2 In the **Password** dialog box, enter a password, using at least 4 and no more than 16 characters. Reenter the password in **Confirm password** and click **OK**.

Clearing the Administrator Password

- 1 In the **Device Settings** tab, click **Administrator**.
- 2 In the **Enter Password** dialog box, type the password and click **OK**.
- 3 In the **Administrator Settings** dialog box, clear the **Password protect administrator settings** check box.
- 4 Click **OK**.

SNMP

Simple Network Management Protocol (**SNMP**) is a set of rules that govern the management of network devices, such as printing systems. **SNMP** settings determine the level of security when using the **Auto Configure** feature, and prevent unauthorized printing to the **SNMPv3** printing system. **SNMP** settings must be set in the printer driver and in the printing system's Command Center.

The following **SNMP** options are available:

SNMPv1/v2c

This option ensures successful **Auto Configure** communication using **Read community name** and **Write community name**.

SNMPv3

This option ensures secure **Auto Configure** communication using a user name and password. Authentication and privacy options are available by selecting **Settings**.

Apply to other models

Select from the list of installed printing systems to apply the selected **SNMP** settings.

SNMPv3 Options

You can select **SNMPv3** options for secure communication with the printing system.

Authentication

This option provides an algorithm to check that a transferred file has arrived intact. Message Digest 5 (**MD5**) and Secure Hash Algorithm 1 (**SHA1**) are hash algorithms used to authenticate packet data.

MD5

This option provides a cryptographic hash function with a 128-bit hash value. It adds security and protection against Gateway Load Balancing Protocol (GLBP)-spoofing software.

SHA1

This option produces a message digest that is 160 bits long. **SHA1** is the successor to **MD5**.

Privacy

This option uses encryption for secure communication. It is available after you select the **Authentication** option. You may select one privacy option.

DES

This option uses the Data Encryption Standard for encryption. **DES** turns cleartext into ciphertext via an encryption algorithm. It encrypts and decrypts data using 8-byte blocks and a 56-bit key.

AES

This option uses the Advanced Encryption Standard for encryption. **AES** is a symmetric block cipher that can process data blocks of 128 bits, using cipher keys with lengths of 128, 192, and 256 bits. It is more secure than **DES**.

Selecting SNMP Settings

SNMP settings in the driver must be set to match the settings in the printing system's Command Center.

- 1** In **Device Settings > Administrator**, click **SNMP Settings**.
- 2** Select **SNMPv1/v2c** or **SNMPv3**.
For **SNMPv1/v2c**, type the **Read community name** and **Write community name**, up to 32 characters, and click **OK**.
For **SNMPv3**, type a **User name** up to 32 characters, and a **Password** from 8 to 32 characters.
- 3** To set authentication and privacy options for **SNMPv3**, click **Settings**.
- 4** In the **SNMPv3** dialog box, select from the available options.

- 5 Click **OK** in the **SNMPv3** dialog box.
- 6 Optional: You can click **Apply to other models** and select from available models. The **SNMP** settings are applied to all selected models.

User Settings

User Settings lets you specify user and department names, select the default unit of measure, and change the driver display language.

In a client/server environment, this feature is unavailable to a client logged in as a restricted user.

Identification

Identification lets you identify your print job with a **User name** and **Department** name, up to 31 characters. The **User name** can be used to identify a print job stored on the hard disk.

Setting User Identification

You can type **User name** and **Department** information to be used with the **Job Storage (e-MPS)** feature.

- 1 In **Device Settings > User**, type your preferred name in the **User name** text box.
- 2 Type your department or group name in **Department** text box.

You can type up to 31 characters in the **User name** and **Department** text boxes.

Units

You can set **Inches** or **Millimeters** as the unit of measurement. This is used for the following settings:

Custom page size setting in the **Page Sizes** dialog box in the **Basic** tab.

Spacing setting in the **Watermark Add** and **Edit** dialog boxes in the **Advanced** tab.

Poster settings and **Gutter** settings in the **Layout** tab.

Selecting a Unit of Measurement

You can select a unit for displaying measurements in the user interface.

- 1 In the **Device Settings** tab, click **User**.
- 2 Select **Inches** or **Millimeters**.

Language Preference

The **Language preference** option specifies the user interface language of the **Device Settings** tab of **Printer Properties** and all tabs of **Printing Preferences**.

Available languages vary depending on your locale and your computer settings.

Setting Language Preference

You can select a user interface language.

- 1 In **Device Settings > User**, select the desired language from the **Select language** list.
- 2 Click **OK** in the **User Settings** and **Properties** dialog boxes.

PDL (Page Description Language)

A Page Description Language (PDL) specifies the contents and layout of a printed page. In the **Device Settings** tab, you can choose from **PCL XL**, (Printer Command Language XL), **PCL 5c**, **KPDL** (an emulation of PostScript printing), or **PDF** (Portable Document Format). If your application supports the XML Print Specification, then printing can be performed by installing the **XPS** driver. With the **XPS** driver, the only **PDL** option is **XPS**. The printer default is **PCL XL**, which is suitable for most printing purposes. After you select a **PDL**, the selection appears in the lower corner of the **Preview image**.

In **GDI compatible mode**, vector graphics are rasterized for printing as bitmap images. Use the **GDI compatible mode** option to improve the output quality of the graphic created by the application.

Note: To add **PDF** to the list of PDL choices, you must install the **Output to PDF** plug-in.

In a client/server environment, this feature is unavailable to a client logged in as a restricted user.

PDL Options

The PDL options, available in the **PDL Settings** dialog box, are accessed in **Device Settings**.

PCL XL

The most recent version of HP PCL and PCL 6. This PDL includes PCL 5c features. PCL XL lacks backward compatibility with earlier PCL versions, though it is enhanced over PCL 5c in these areas:

- Reduced file size
- Better print speed
- Faster return to application

PCL 5c

- Fully compatible with earlier PCL versions
- Bidirectional communication support
- Wide selection of fonts for use with Microsoft Windows applications
- Complex graphics might not print as well

KPDL

KPDL is used when printing from applications that support PostScript 2 or 3.

- An emulation of PostScript printing
- Strong graphics reproduction
- Print speeds may be slower than PCL 5c

- Requires more printing system memory than PCL 5c
- Enables native TrueType font downloading
- Supports most Graphics settings options

PDF

Output to PDF is a plug-in that lets you print or save documents from multiple sources to Adobe Portable Document Format (PDF). The PDF format is independent of the operating system and application software used to create documents.

Note: With PDF selected as the PDL, only a limited set of driver options is available.

Use as an alternative to existing commercial applications for creating PDF documents.

Documents saved as PDF retain their original appearance, and can be viewed and printed with the free Adobe Reader on Windows, Mac OS, and UNIX platforms.

Selecting PDL Options

You can select a page description language from **PDL** options.

- 1** In **Device Settings** > **PDL**, select the desired Page description language from the **Select PDL** list.
- 2** Select the **GDI compatible mode** option to improve the output quality of graphics created by your application.
- 3** **Settings** is available when the **PDL** is set to **KPDL** or **PDF**.

If you select **KPDL** as the PDL, you can click **Settings** to open the **KPDL Settings** dialog box. Select the **Allow data passthrough** check box to reduce errors when printing complex jobs from applications that use PostScript formatting.

Note that if you select **Allow data passthrough**, **EMF spooling** is not available in the **Advanced** tab.

If you select **PDF** as the PDL, you can click **Settings** to open the **PDF Settings** dialog box.
- 4** Click **OK** in the **PDL Settings** dialog box.

PDF

Output to PDF is a plug-in feature that lets you print and save documents from multiple sources to Adobe PDF. This feature can be used as an alternative to existing commercial applications for creating PDF documents. Documents saved as PDF retain their original appearance, and can be viewed and printed with Adobe® Reader® on Windows, Mac OS®, and UNIX® platforms.

For a document using mixed paper sizes, all pages in the PDF use the size of the first page.

Note: With PDF selected as the **Page description language**, only a limited set of driver options are available.

PDF Options

You can select **PDF** options if you have installed the **Output to PDF** plug-in. The **PDF Settings** dialog box contains the following options:

PDF Settings

Embed fonts

This option ensures that document fonts appear accurately in the **PDF** file on screen. This option ensures accurate reproduction but significantly increases the file size.

Compress data

This option enables flat compression for the generated **PDF** document. This option significantly reduces the file size. Additional compression options are available within Adobe Acrobat.

Security

This option applies encryption to the **PDF** document. Click **Settings** for additional **Security** settings. See the next section for details.

Print and save

This option lets you print and save a document as a PDF file. Click **Settings** for additional **Print and save** settings.

Security Settings

This option lets you select an encryption level and create passwords for the generated **PDF** file.

The following security options are available:

Encryption

Encryption provides password protection so that a document cannot be opened or altered by unauthorized users.

40-bit

This encryption option provides low level security for a PDF document. It is supported for earlier versions of Adobe Acrobat and Adobe Reader 3.0 - 4.x.

128-bit

This encryption option provides high level security for a PDF document. It is supported for Adobe Acrobat and Adobe Reader 5.0 or later.

Passwords

Select passwords for changing security settings and for opening a document. Passwords are supported up to 16 characters in length.

Require password to change security settings

Type an Owner password. Within Adobe Acrobat, this password is required to change the document restrictions in the **Files > Properties > Security** section.

Require password to open document

Type a User password. The user password must be entered at the time the PDF document is opened. This password must be different from the owner password.

Print and Save Settings

This option lets you print and save a document as a PDF file.

Save to file only

A PDF file is created and saved locally.

Save to file and print

A PDF file is created, saved locally, and sent to print.

After you select between these two options, you can choose the following option:

Automatically save to default file

A PDF file can be saved automatically as a default file to be used again.

You can then select from the following options:

Replace default file

This option lets you rename the default file name.

Use default file + date and time

This option lets you use the default name and add a date and time stamp each time the document is saved.

Default file directory

This option lets you browse to a location to save your PDF.

Printing and Saving to PDF

You can print a document and save it to Adobe PDF, if you have installed the **Output to PDF** plug-in.

- 1** Click **Start**, then click **Control Panel** and double-click **Printers** (Windows Vista), or **Printers and Faxes** (Windows XP).
- 2** Right-click on the desired printing system model.
- 3** Click **Properties**, then click the **Device Settings** tab.
- 4** Click **PDL**.
- 5** In the **PDL Settings** dialog box, in the **Select PDL** list, select **PDF**.
- 6** Click **Settings**.
- 7** In the **PDF Settings** dialog box, select **Print and save**.
- 8** Click **Settings**, and select from print and save options. See the **PDF Options** topic for details.
- 9** Click **OK** in all dialog boxes.
- 10** Open and print the document.
- 11** Name and save the **PDF** file.

Windows Vista XPS Driver

The XML Paper Specification (**XPS**) Page description language provides the most efficient method for displaying, processing, and printing documents. As both a **PDL** and a document format, **XPS** requires compatible printer hardware and software written for the Windows Presentation Foundation (WPF) architecture. **PCL** and **KPDL** are not compatible with an **XPS** environment. Therefore, an **XPS** driver supports a single **PDL** setting, **XPS**. The **XPS** driver can be installed from the **Product Library CD**. In the **Installation Method** menu, click **Custom Mode**, and on the **Custom Installation** screen, select **KX XPS DRIVER**.

GDI compatible mode, **PDF**, and **Fonts** are not available in the **XPS** driver.

To view a print to file **XPS** document, download and install the Microsoft XPS Viewer.

Compatibility Settings

Compatibility Settings lets you specify media source values, override the application's **Collate** setting, and combine the **Source** and **Media type** lists in the **Basic** tab.

In a client/server environment, this feature is unavailable to a client logged in as a restricted user.

Media Source Enumeration

Media source enumeration supports compatibility for media source values unique to the printer driver, such as those for cassettes or feeders. Your newly installed printer driver maintains identical media source support with the driver it replaces, whether for this driver or one from another manufacturer. If media source macros exist for the older driver, then the alignment of media source values maintains support without the need to change the macros.

Setting Media Sources

Use the **Driver Info** utility (\Utility\Driver Info\DrvInfo.exe) to compare the source values for all installed drivers.

If the values for a given media source differ between printer drivers, you can reassign an enumerated value to create a match between the drivers.

- 1** In the **Device Settings** tab, select **Compatibility**.
- 2** From the **Media source enumeration** list, select the paper supply method. The current value is listed in the **Enumerated value** box.
- 3** Type an **Enumerated value** for the media source, and click **Apply**. To align settings with a different driver, this value should align with those in the other driver.

You can restore all the options in **Compatibility Settings** to the default by clicking **Reset**.

Ignore Application Collation

This option bypasses the **Collate** setting in software applications, and gives priority to the printer driver setting.

With the check box selected, the printer driver **Collate** setting is used.

With the check box cleared, the application **Collate** setting is used.

Selecting Printer Driver Collation

You can ignore the collation setting in the application and use the printer driver collation setting.

- 1 In the **Device Settings** tab, select **Compatibility**.
- 2 Select **Ignore application collation**.

You can restore all the options in **Compatibility Settings** to the default by clicking **Reset**.

Combine Source and Media Type Lists

You can change the driver's **Basic** tab so that **Media type** and **Source** are combined into one list, labeled **Source**. In the combined list, Media types are listed first, followed by cassettes and MP tray.

Creating a Combined Source List

You can combine the **Source** and **Media type** lists in the **Basic** tab, to make one **Source** list.

- 1 In the **Device Settings** tab, select **Compatibility**.
- 2 Select **Combine source and media type lists**.

You can restore all the options in **Compatibility Settings** to the default by clicking **Reset**.

3 Quick Print

In the **Quick Print** tab, you can apply basic print settings to print jobs. Any **Quick Print** settings can be saved as a group, called a profile, and applied to any print job. Profiles support common printing tasks.

The Administrator can set the view of the **Quick Print** tab through the **Installation** process, or **Administrator Settings** in **Properties**.



Quick Print Options

You can set one or more print options on the **Quick Print** tab. You can also select from profiles that have been set with predefined options for frequently run print jobs.

Specifying Print Options

The upper section of the **Quick Print** tab has several icons that represent the most common options for print jobs. Click on the **Quick Print** icons and check boxes to change settings for the print job. Some of these options also appear on the **Basic**, **Layout**, and **Imaging** tabs. The last tab you made your selection is the display you see on the other related tabs.

Orientation

This icon changes between portrait and landscape printing formats. If needed, check **Rotated** to change the orientation of the printed page by 180 degrees.

Color Mode

This icon changes between color and black & white printing. If desired, check **EcoPrint** to make text and graphics appear lighter in the printed job. **EcoPrint** does not increase print speed.

Collate

This icon changes the ordering of the printed pages. The page ordering sequence can either be 123, 123, 123, or 111, 222, 333, and so on.

Print on both sides

This icon changes between duplex printing for flipping on the long edge, duplex printing for flipping on the short edge, or for not using duplex printing.

Multiple pages per sheet

This icon changes between Off, 2, and 4 for the number of pages printed on one sheet. For more than 4 pages per sheet, define these settings in **Layout > Multiple pages per sheet**.

Any basic print options can be **Reset** to the default values in the **Quick Print** tab. This button only appears when it is accessed from an application's **Print** dialog box.

The following sections describe some of the **Quick Print** tab options in more detail. **Color mode** can also be found in the **Basic** and **Imaging** tabs, **Collate** and **Duplex printing** in the **Basic** tab and **Multiple pages per sheet** in the **Layout** tab. The **Profiles** options is accessed from **Printing Preferences**.

Color Mode

Color mode lets you choose full-color printing (CMYK) or printing with black toner only. When the selection appears in color, all color settings in the driver are enabled. Color cannot be chosen if **Black & White** is selected in the **Device Settings > Administrator Settings > Black & White mode**.

Collation

Collate specifies the order in which the pages of a multiple copy job are printed. With **Collate** selected, the first time the print job is sent to the printing system the data is rendered as page images in the printing system's memory. The remaining job copies are printed from the stored data. This avoids the extra processing involved in sending every copy from the computer to the printing system.

With **Collate** selected, the driver prints the complete job set by set. With **Collate** cleared, it prints each page by set. For example, with **Collate** selected, three copies of a five-page document outputs as pages one through five in succession, three times.

Duplex Printing

Duplex printing is printing on both sides of each page. Select **Print on both sides** to start duplex printing. If it is not selected, then the printer prints on only one side of each page. The printer system contains a duplex unit that turns the paper over to allow printing on the reverse side. **Print on both sides** must be selected to print on both sides of the cover and insert pages.

Flip on long edge

Turn the long edge of the page to view the content, like the pages of a book bound at the side.

Flip on short edge

Turn the short edge of the page to view the content, like a tablet bound at the top.

Multiple Pages per Sheet

Multiple pages per sheet prints several pages on a single sheet of paper for the purpose of reviewing the document and conserving paper. The readability of the multiple pages decreases as the number of pages per sheet is increased. You can set the arrangement of the pages from the **Layout** tab as well as print borders around each of the pages.

Profile Options

In the **Profiles** section, you can select from available profiles to print a job. You can select from predefined profiles, or you can create your own profile, and import profiles. You can also rearrange the icons and edit and delete profiles.

Selecting Profiles

The **Profiles** button at the bottom of the **Quick Print** tab always includes a **Factory Default** profile that returns the driver options to their default settings. The profiles can include **Common Profiles**, which are installed as optional components through the **Printer Installation Wizard**, and any custom profiles created. **Factory Default** and administrator profiles cannot be modified.

- 1 Click **Profiles**.
- 2 In the **Profiles** dialog box, select a profile.
- 3 Click **Apply**.
The side panel displays the options for that profile. If any of the **Quick Print** options are not represented in the predefined profile, the **Quick Print** icon will be unavailable.
- 4 Click **OK**.

Saving a Profile

The **Save** button lets you create your own profiles. You can select the printing options you want in the driver, then save the driver settings including your customizations as a profile. You can then use that profile to print the same type of print job again without having to reselect all the settings. In **Printing Preferences**, the **Profiles** button appears at the bottom of all the tabs.

- 1 Set the printing options you want for your print job by opening **Printing Preferences** and selecting all your driver settings.
- 2 Click **Profiles > Save**.
- 3 To identify the profile, type a **Name**, select an **Icon**, and type a **Description**.

- 4 Click **OK** to save the profile.
The newly added profile appears in the **Profiles** dialog box.
- 5 Click **Apply** to activate the selected profile to the current print job, or click **OK** to save the profile.

Note: To reset the printer driver to default settings, select the **Factory Default** profile, and click **Apply**. This clears the settings of a selected profile.

Editing a Profile

The **Edit** button lets you make changes to an existing profile. The **Factory Default** profile cannot be edited.

- 1 Click **Profiles**.
- 2 In the **Select profile** section, highlight the profile to be edited, and click **Edit**.
- 3 Any of the three options can be edited: name, icon and description. Click **OK** to save the edited changes.
The newly edited profile appears in the **Profiles** dialog box.
- 4 Click **Apply** to activate the selected profile to the current print job, or click **OK** to save the profile.

Deleting a Profile

The **Delete** button lets you remove an existing profile. The **Factory Default** profile cannot be deleted.

- 1 Click **Profiles**.
- 2 In the **Select profile** section, highlight the profile to be deleted, and click **Delete**.
- 3 A message appears confirming the removal of the profile. Click **Yes** to remove.
- 4 Click **OK** to close the **Profile** dialog box.

Importing a Profile

The **Import** button lets you import a copy of a profile from other printer drivers into your printer driver.

- 1 Click **Profiles > Import**.
- 2 Browse for the existing profile (.KXP), select it, and click **Open**.
A message appears if any of the profile settings in the imported file are not available in the existing driver. Select **Yes**, to import the profile, or **No**, to cancel the import.

- 3** If you selected **Yes** in the previous step, the newly imported file appears in the **Profile** dialog box.
- 4** Click **Apply** to activate the selected profile to the current print job, or click **OK** to save the profile.

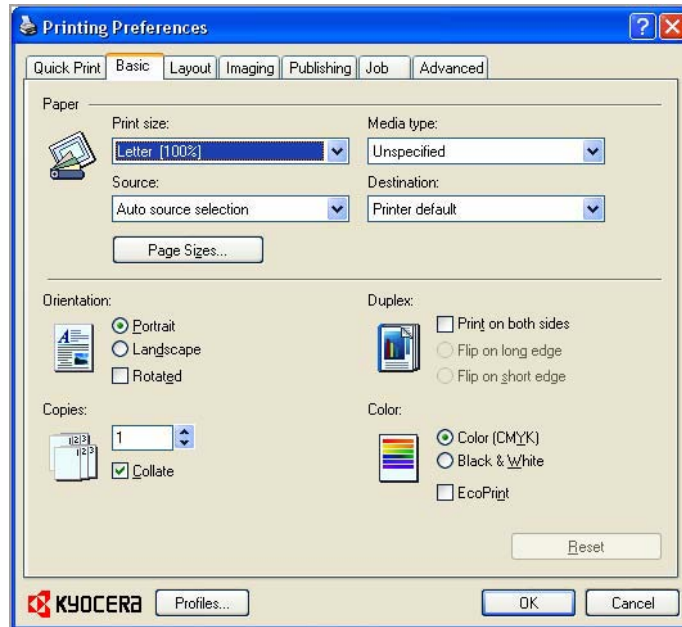
Exporting a Profile

The **Export** button lets you export a copy of a profile from your printer driver for use in other printer drivers. The **Factory Default** profile cannot be exported.

- 1** Click **Profiles**.
- 2** In the **Select profile** section, highlight the profile to be exported, and click **Export**.
- 3** The **Export Profile** dialog box appears. Name and save the profile.
- 4** Click **OK** to close the **Profiles** dialog box.

4 Basic

In the **Basic** tab, you can specify the most commonly used printer driver settings.



Basic Paper Settings

The Basic tab contains several settings for basic printing tasks.

Print size

This setting sets the size of the area that the printer prints to, regardless of the actual paper size that is used by the printing system.

Source

This setting specifies the cassette or tray that the printing system draws paper from. Unless you are using a custom paper type, you can leave it set to **Auto source selection**.

Media type

This setting selects the **Source** based on the types of media that are specified in the printing system. In general, you can leave it set to **Unspecified**.

Destination

This setting specifies which output tray is used for the print job output.

Orientation

This setting specifies the paper orientation of the print job. If **Rotated** is selected, the print job orientation is rotated 180 degrees.

Copies

This setting specifies the number of copies to print. For collating multiple copies, select **Collate**.

Print on both sides

This setting enables duplex printing.

Color

This setting specifies full-color printing, printing with black toner only, and the optional **EcoPrint** mode.

Note: Some applications may override print settings made in the driver. Usually the application can be set to follow the settings. In Microsoft Word 2007, ensure that **Default tray** in **Options** is set to **Use printer settings**.

Source and Media Types

In the **Basic** tab, **Source** specifies which tray or cassette the printer uses for a printing job. The default is **Auto source selection**, which instructs the printer to search for the media requested by the application or the printer driver. If the selected tray or cassette empties during a print job, then the printer searches for another source, and continues the job.

Media type instructs the printer to search for the type of paper or media that is requested by the application or the printer driver. The choices shown may change depending on the selection in **Source**. If **Auto media selection** is selected, then the printer searches for another tray or cassette using the same media.

Transparencies must be printed using the MP tray, and labels and envelopes require the MP tray. Ensure the paper is properly loaded by following the instructions outlined in the printing system's *Operation Guide*.

Note: **Source** and **Media type** are separate items in the dialog box, but can be combined using the **Combine source and media type lists** setting in **Compatibility Settings**. If they are combined, **Media type** is not available on the **Basic** tab. To change this setting, open **Device Settings > Compatibility Settings** and clear the **Combine source and media type lists** selection.

Print Size and Page Size

Print Size controls the output page size of the document. To use this setting, ensure that the **Page Sizes** setting matches the page size setting in your application. If the **Print Size** is different from the page size in your application, then each page will be enlarged or reduced to match the **Print Size**. The percentage value shown in brackets indicates the size of the **Print Size** setting relative to the **Page Size** setting. If the **Page Sizes** does not match the page size setting in the application (the size of the original), then, in most cases, the **Print Size** is ignored and the document prints out based on its original size.

You can create a page size with your chosen dimensions for printing on non-standard size paper. You can then save the custom setting to the **Page Sizes** and **Print Size** lists for later selection.

Creating a Custom Page Size

To use custom page sizes, they must be created and added to the **Print size** list. The driver supports a maximum of twenty custom sizes.

- 1 In the **Basic** tab, click **Page Sizes**.
- 2 Click **New**.
- 3 A default custom name appears in the **Name** box. Type a name for your custom page size.
- 4 Type or select values for the height and width. If the height or width value exceeds the allowable limit, it automatically adjusts to the limit after **Apply** or **OK** is clicked.
- 5 When done, click **Apply**.

The custom page size appears in the **Print size** list, which is used for enlarging and reducing the sizes of prints.

To delete a custom page size from the **Page Sizes** dialog box, select the name of the custom page size and click **Delete**.

Printing with Custom Size Pages

You can print on custom-sized pages (or other media such as transparencies) by performing these steps:

- 1 In your application, select **Print** from the **File** menu.
- 2 In the **Print** dialog box, click **Properties**.
- 3 In the **Basic** tab, select the name of your custom page size in the **Print Size** list.
- 4 From the **Source** list, select the **MP tray** for the custom page size. Click **OK** to return to the **Print** dialog box. Click **OK** to start printing.

Duplex Printing

Duplex printing is printing on both sides of each page. Select **Print on both sides** to start duplex printing. If it is not selected, then the printer prints on only one side of each page. The printer system contains a duplex unit that turns the paper over to allow printing on the reverse side. **Print on both sides** must be selected to print on both sides of the cover and insert pages.

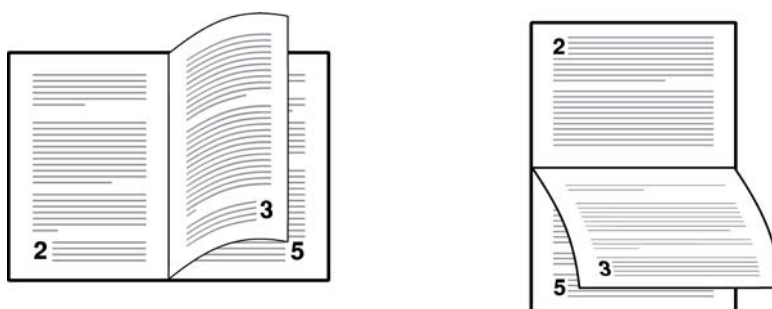
Flip on long edge

Turn the long edge of the page to view the content, like the pages of a book bound at the side.

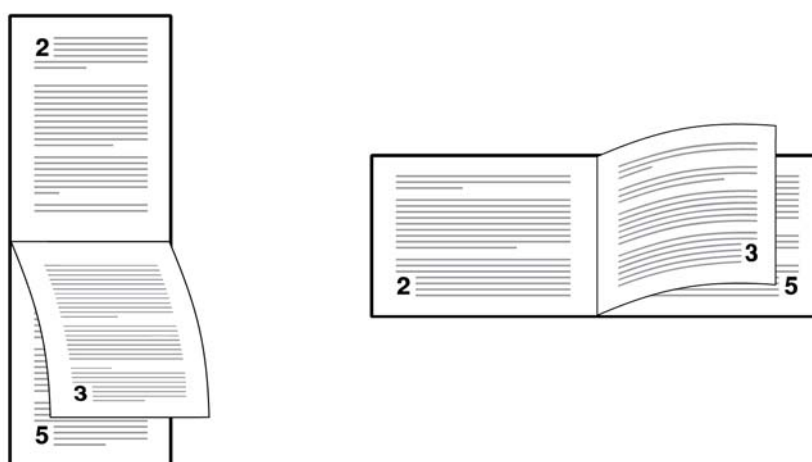
Flip on short edge

Turn the short edge of the page to view the content, like a tablet bound at the top.

Flip on long edge



Flip on short edge



Printing in Duplex Mode

- 1 In the **Basic** tab, select **Print on both sides**.
- 2 Select either **Flip on long edge** or **Flip on short edge**.

Collation

Collate specifies the order in which the pages of a multiple copy job are printed. With **Collate** selected, the first time the print job is sent to the printing system the data is rendered as page images in the printing system's memory. The remaining job copies are printed from the stored data. This avoids the extra processing involved in sending every copy from the computer to the printing system.

With **Collate** selected, the driver prints the complete job set by set. With **Collate** cleared, it prints each page by set. For example, with **Collate** selected, three copies of a five-page document outputs as pages one through five in succession, three times.

Printing Collated Documents

When printing multiple copies of a multipage document, the printer can assemble the pages of each copy in numerical order.

- 1 In your application, open the **Print** dialog box and click **Properties**.

- 2 In the **Basic** tab, select the **Collate** check box.
- 3 Type or select the number of complete sets in the **Copies** box. When printing using the collate option, specify the number of copies to print. The document page count must not exceed the printer tray capacity.
- 4 Click **OK** to return to the **Print** dialog box, and click **OK** to begin printing.

Printing in Color, Black & White, and EcoPrint

The options in **Color** let you choose full-color printing or printing with black toner only and EcoPrint, which makes text appear lighter. The following color modes are available:

Color (CMYK)

This mode prints full four-color text and graphics.

Black & White

This mode prints with black toner only, constraining all color settings.

EcoPrint makes the entire image, text and graphics, appear lighter in the printed job. **EcoPrint** does not increase print speed.

Color, **Black & White** and **EcoPrint** also appear in the **Quick Print** tab and in the **Imaging** tab. Changes in **Quick Print**, **Basic**, or **Imaging** tabs are reflected in the other dialog box.

Select between **Color (CMYK)** or **Black & White** for your printing job. **EcoPrint** is optional.

Kyocera Logo

The **Kyocera** logo appears at the bottom of every driver tab. Click the logo to open the **About** dialog box that displays the driver version number and driver plug-in information.

Displaying Version Information

Click **Version** to view the following driver information:

File Name

Version

Description

Date

Manufacturer

Comments

To view copyright information, click **Legal Notices**.

Click **OK** to close the driver information dialog boxes.

Displaying Plug-in Information

Click **Plug-in** to view the following plug-in information:

Module

Description

Version

Removing a Plug-in

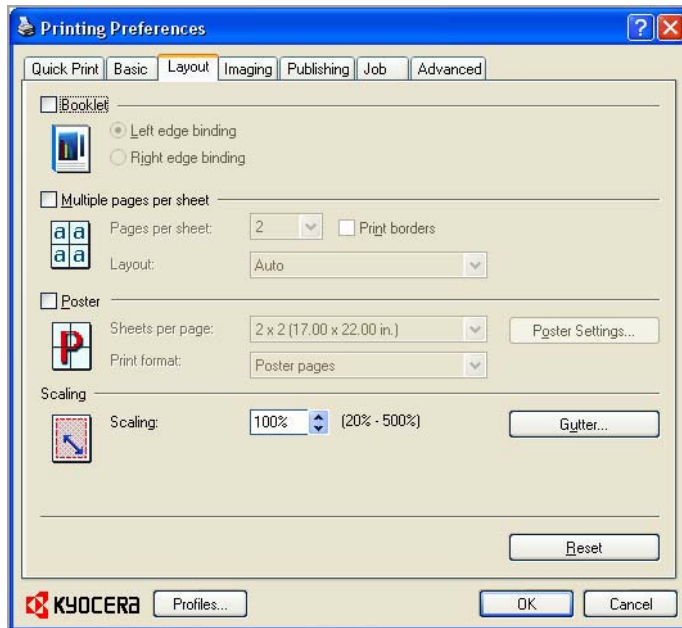
You can remove an installed plug-in from the driver. When removed, the plug-in features will not appear in the driver interface.

- 1** Click **Start**, then click **Control Panel** and double-click **Printers** (Windows Vista), or **Printers and Faxes** (Windows XP).
- 2** Right-click the desired printer icon.
- 3** Select **Properties**.
- 4** Select the **Device Settings** tab.
- 5** Click the **Kyocera** logo to open the **About** dialog box.
- 6** Click **Plug-in** to open the **Plug-in Information** dialog box.
- 7** Select a plug-in module from the list and click **Delete**, then **Yes**.
- 8** Click **OK** in all dialog boxes.

Note: To remove the **Output to PDF** module, PDF must not be selected in the **PDL Settings** dialog box.

5 Layout

In the **Layout** tab you can arrange document data on printed pages without affecting the original document.



Booklet

Booklet prints a two-page layout on both sides of each sheet of paper. You can fold and bind the booklet in the center. Folded booklets are half the size of the selected paper. For example, if you select **Letter** in **Basic > Paper > Print size**, the printed output can be folded into a 5.5 x 8.5 inch-size booklet.

When **Booklet** is selected, other options such as **Multiple pages per sheet**, **Poster**, and **Scaling** are unavailable.

A different paper source can be selected for the booklet cover. To include a cover on the booklet, select the **Publishing** tab, then select **Cover mode**.

Printing a Booklet

Booklet printing requires that you choose left edge binding or right edge binding as in the following:

- 1 In the **Layout** tab, select **Booklet**, and one of the two binding options.
 - Left Edge Binding**
This selection prints text that reads from left to right.
 - Right Edge Binding**
This selection prints text that reads from right to left.
- 2 Click **OK** to return to the **Print** dialog box.
- 3 Click **OK** to begin printing.

Multiple Pages per Sheet

Multiple pages per sheet prints several pages on a single sheet of paper for the purpose of reviewing the document and conserving paper. The readability of the multiple pages decreases as the number of pages per sheet is increased. You can set the arrangement of the pages from the **Layout** tab as well as print borders around each of the pages.

Printing Multiple Pages per Sheet

This section describes selecting and printing an arrangement of pages on a single sheet of paper.

- 1 In the **Layout** tab, select **Multiple Pages per sheet**.
- 2 In **Pages per sheet**, select the number of pages to print on each sheet of paper.
- 3 If you want to print a border around each page, select **Print borders**.
- 4 In the **Layout** list, select the horizontal direction the pages should flow.
- 5 Click **OK** to return to the **Print** dialog box.
- 6 Click **OK** to begin printing.

Poster

Use **Poster** to print a document to a size that is larger than the paper your printer can support. You can print a poster, or banner, up to 25 times larger than the original document. Segments of the poster document are printed on several sheets of paper and with the assistance of poster settings, you can reassemble the sheets easily to create a poster.

Use **Sheets per page** to select the poster size in relation to the original document size. Each option shows the number of sheets to be printed and the maximum poster size.

Note: The **Sheets per page** displays the unit of measurement in inches or millimeters. To change the **Units** setting, open the **Printers and Faxes** folder, right-click your printer. Click **Properties > Device Settings > User**.

Use **Poster Settings** to select options, in any combination to make it easier to create a poster. These options print visual cues on the poster sheets that provide help in cropping and assembling the pages.

Overlap edges

This selection duplicates the edges of document data on adjoining sheets. Poster appearance is improved when the edges overlap slightly. Select the check box, then type or select a value between 0.00 and 1.20 inches (0.0 and 30.4 mm). This option reduces the final poster size slightly.

Print crop marks

This selection prints a border at the edges of each poster sheet. You can crop each sheet on the border before assembling the sheets. This option ensures that data on adjoining sheets matches precisely.

Print assembly marks

This selection prints numbers at the edges of each sheet, matching numbers on adjoining sheets. Assemble each sheet edge to the same numbered edge on another sheet.

Use **Print format** to print a proof sheet, along with the poster, to guide you in assembling the printed poster sheets.

Poster pages

This selection prints all of the sheets to be assembled as a poster.

Proof sheet

This selection prints all the poster pages on one sheet with markings that display the sheet assembly.

Poster pages and proof sheet

This selection prints all poster sheets and a one-page proof sheet.

Printing a Poster

To print a poster or banner, follow these steps:

- 1** In the **Layout** tab, select **Poster**.
- 2** In **Sheets per page**, select the poster size. Each option describes the number of sheets it takes to represent one finished poster page.
- 3** Click **Poster Settings** to select options in any combination. These options ensure a precise assembly of the pages to create the poster.
- 4** In **Print format**, select one of the options for a finished print format.
- 5** Click **OK** to return to the **Print** dialog box.
- 6** Click **OK** to begin printing.

Scaling

Scaling increases or decreases text and graphics on a page. You can also select a gutter setting that enlarges the margins to accommodate an easier assembly of the pages into a booklet. Scaling is not available when **Booklet**, **Poster** or **Multiple pages per sheet** is selected.

Setting Scaling on the Page

To set scaling values, follow these steps.

- 1 In the **Layout** tab, select **Scaling**.
- 2 Type or select a percentage between 20 to 500.
Scaling adjusts proportionately the height and width of the page. A lower percentage reduces the page and a higher percentage enlarges the page.
- 3 Click **OK**.

Gutter

A gutter creates additional blank space on the left side and at the top of the sheet. It is often used for binding, hole punch or stapling to make a print job easier to read. Increasing the measurements in **Gutter** increases the margins around your text and graphics on the left side, or top of the printed sheet. This creates a larger margin space by shifting the printable area to the right, or down as much as one inch (25.4 mm).

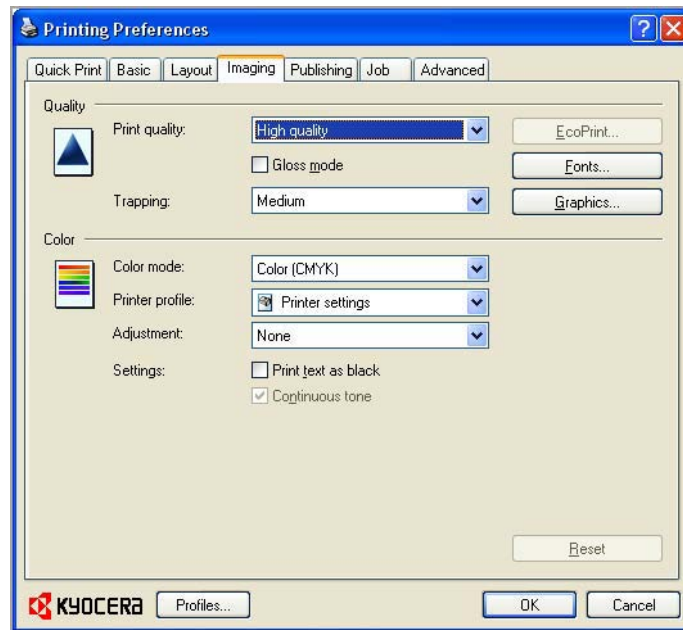
Creating a Gutter

To create a gutter, follow these steps.

- 1 In the **Layout** tab, click **Gutter**.
 - 2 In the **Gutter width** options, type a value between .20 to 1.00 inches (5.0 to 25.4 mm).
 - Long edge (left)**
This selection modifies the outside margin on the left-side of the page.
 - Short edge (top)**
This selection modifies the outside margin on the top-edge of the page.
-
- Note:** Availability of **Gutter** settings varies depending on **Orientation** and **Duplex mode** settings in the **Basic** tab.
-
- 3 If text extends too close to the edge of the page, select **Reduce image to fit**. The text appears slightly reduced and away from the edge of the page. If text does not extend beyond the page when the gutter increases, clear **Reduce image to fit**.
 - 4 Click **OK** to save gutter settings, then click **OK** again to return to the **Print** dialog box.
 - 5 Click **OK** to begin printing.

6 Imaging

In the **Imaging** tab, you can manage print quality and color settings.



Print Quality, EcoPrint, and Gloss Mode

Print quality sets the resolution for the print job. Resolution is a measurement, in dots per linear inch (dpi), that describes the sharpness and clarity of printed text and images. Select **High quality** or **Custom** from the **Print quality** list.

EcoPrint makes the entire image, text and graphics, appear lighter in the printed job. **EcoPrint** does not increase print speed. From the **Print quality** list, select **Custom**, then click **EcoPrint** to open the dialog box. In the **EcoPrint** dialog box, select **On**.

Gloss mode simulates high-gloss copies by adding a glossy appearance to printed text and images.

Note: **EcoPrint** and **Gloss mode** cannot be used at the same time.

Selecting Print Quality

In the **Imaging** tab, select a **Print quality** from the list. The number of selections in Print quality depends on the number of resolutions supported by the printing system.

High quality

Select this setting to print at the highest printing system resolution.

Custom

Custom lets you choose a setting for **EcoPrint**. Selecting **Custom** without **EcoPrint** results in a default setting to the highest printing system resolution.

Trapping

In color printing, color inks or toners are applied separately to a page. A color image has its component colors applied in color separations of cyan, magenta, yellow and black. These color separations must be aligned (registered) precisely to produce a quality full color image. During printing, the paper or media type may shift slightly. While the shift might be very small, the gaps between the colors in the image can be noticeable. Color trapping corrects it by overlapping colors slightly so that minor alignment issues are corrected.

Setting Trapping Values

To use trapping in a document, follow these steps.

- 1 From the **Trapping** menu, select a value for the print overlap pixel width:
 - Light**, 0.5 pixel trapping
 - Medium**, 1 pixel trapping
 - Heavy**, 1.5 pixels trapping
 - Very Heavy**, 2 pixels trapping

Warning: Trapping is not available when the PDL is set to **PCL 5c** or **PDF**.

- 2 Click **Ok**.

Fonts

A computer font is a data file containing a set of glyphs (visual representations of textual elements), characters, or symbols. Common terms for fonts are:

Bitmap fonts define each character as a pattern of pixels (the smallest resolvable rectangular areas of an image). Such fonts are not easily scalable and distort when reduced or enlarged.

Outline fonts, in contrast to bitmap fonts, are defined as a set of mathematical lines and curves. An outline font is more easily scalable (designed to display and print clearly at any point size) than a bitmap font.

Native fonts are the basic or original fonts installed with the computer operating system. TrueType fonts are the native fonts used by Microsoft Windows.

TrueType fonts are a type of scalable outline fonts. TrueType has long been the most common format for fonts on Microsoft Windows.

System fonts are the primary fonts used by the operating system. They are typically accessed through an application interface or through a common font dialog box.

Device fonts are stored either permanently or temporarily in the printing system memory.

Font Settings

The **Font Settings** dialog box lets you specify how TrueType fonts are sent to the printing system. The chosen method affects the speed and quality of the print job:

Download as outlines

This method is best suited for large documents or print jobs using multiple fonts and font sizes. Print speeds are faster because of the optimization features in this setting. The repetition of similar font data sent to the printing system is reduced, thereby increasing the print speed. Print speed is not increased when using Asian fonts such as Japanese, Chinese, and Korean, because of the large amount of font information used for these particular fonts.

Allow native download

This method improves text quality and increases print speed by converting TrueType fonts to Adobe Type 42 font format. This feature is available when **KPDL** is selected.

Download as bitmaps

Downloading fonts as bitmaps provides more detail, however it creates large file sizes. This is best suited for print jobs with user-defined fonts, very small fonts (point size 1-4), or Asian fonts.

Substitute with device fonts

System fonts and device fonts are automatically matched based on typeface name. This function increases print speed and efficiency. It is useful for changing a font used throughout a large document, by replacing the old font with the desired font.

Note: **GDI compatible mode** does not support **Substitute with device fonts**.

Selecting Font Settings

- 1 Click **Fonts** to open the **Font Settings** dialog box.
- 2 Select one of the methods for sending TrueType fonts, and then click **OK**.

Font Substitution

Font substitution is the process of using one font in place of another when the intended font is not available to a printing system. Font substitution may be critical for output of documents to printing systems that are not well supported by a large font inventory.

Setting Font Substitution

To set values for font substitution, follow these steps.

- 1** In the **Imaging** tab, click **Fonts > Substitute with device fonts** check box > **Fonts** button that opens the **Fonts Substitution** dialog box.
The **System fonts** list shows the fonts installed on your computer. The **Available device fonts** list shows the printing system fonts.
- 2** Highlight the system font, and then the available device font to be substituted.
- 3** Click **OK** to save your settings. If the device font does not have similar font characteristics to the system font, character spacing in the document may appear incorrect.

Disable Device Fonts

In some cases, the printing system substitutes fonts even if you send the TrueType fonts as outline fonts or bitmap images. Select **Disable device fonts** to prevent substitution of device fonts for TrueType fonts.

This option also improves portability of printable data. (If cleared, device fonts may not match when sent to a different printing system.)

Some Adobe applications have device font limitations. To overcome these limitations, select **Disable device fonts**. Device fonts are normally visible in the application font lists as printer icons next to the font name, unless there are equivalent system fonts, in which case the “TT” TrueType icon remains.

Disabling Device Fonts

To disable device fonts, follow these steps.

- 1** In the **Imaging** tab, click **Fonts**.
- 2** In the **Fonts Settings** dialog box, select the **Disable device fonts** check box.
- 3** Click **OK** to save your settings.

Graphics

Graphics are pictorial representations of information. Graphics can be functional (charts, diagrams) or artistic (drawings, photographs). **Graphics Settings** let you select pattern scaling, inversion, optimization, and CIE options for your printed graphics.

Note: Some options are available only when a specific PDL is selected.

- 1** In the **Imaging** tab, click **Graphics** to open the **Graphics Settings** dialog box.
- 2** In the dialog box, select from **Pattern scaling**, **Inversion options**, **Optimization**, and **CIE option**, and then click **OK** to save your selections.

Pattern Scaling

Pattern scaling is a feature that can help improve visual compatibility between screen and print output. Graphics objects, such as a shape or a path, often include patterns and fills that are composed of collections of printed dots. A pattern is a planned or random repetition of colors, shapes, lines, values, and textures to create a visual arrangement. A fill is the application of a color or

grayscale to a graphics object. If printed patterns and fills do not match the appearance of that on the screen, use **Pattern scaling** to select a different density of printed dots.

Auto (default setting)

This setting prints patterns and fills to match the on-screen appearance.

Coarse

This setting prints patterns and fills with the fewest number of lines, patterns, or dots. Coarse is the same as Auto when **PCL XL** or **PCL 5c** is selected in **Device Settings > PDL > Select PDL**.

Medium

This setting prints patterns and fills with a greater number of lines, patterns or dots than the Coarse setting. Medium is the same as Auto when **KPDL** is selected in **Device Settings > PDL > Select PDL**.

Fine

This setting prints patterns and fills with the greatest number of lines, patterns, or dots. Printed patterns and fills may appear more dense than the on-screen appearance.

Inversion Settings

Inversion is the opposite of the normal order, arrangement, or position of an image or printed content.

In the **Imaging** tab, click **Graphics** to open the **Graphics settings** dialog box and access the **Inversion options**. The settings are available when **KPDL** or **XPS** is selected in **Device Settings > PDL > Select PDL**.

Reverse image

This setting prints images like a photo negative, reversing black and white areas of the image.

Mirror print

This setting prints the page content backwards, as it would appear in a mirror image.

Optimization Settings

Optimization is a process or methodology of improving a printing system's function or effectiveness.

In the **Imaging** tab click **Graphics** to open the **Graphics settings** dialog box and access the Optimization settings. The settings are available when **KPDL** or **XPS** is selected in **Device Settings > PDL > Select PDL**.

Fast printing

This setting increases print speed and decreases spool size. It delivers images in binary format. It can be used for most everyday printing needs.

Document portability

This setting creates a PostScript file in ASCII text encoding. Unlike the binary format created in **Fast printing**, the ASCII text created with this selection can be edited.

CIE Optimization

CIE optimization bypasses the normal procedure of processing every aspect of the CIE color space used in applications such as Adobe Acrobat and Photoshop. This feature increases print speed for documents printed from these

applications by optimizing CIE data. It has no effect on print jobs that do not use CIE data. **CIE optimization** should be selected for speed not accuracy, so printed output may be different from appearance on the screen.

In the **Imaging** tab, click **Graphics** to open the **Graphics settings** dialog box and access the **CIE optimization** check box. **CIE optimization** is available when **KPDL** is selected in **Device Settings > PDL > Select PDL**.

Note: If you are using the Kyocera Mita XPS driver for the Windows Vista operating system, **CIE optimization** is unavailable.

Color Mode

The options in **Color mode** let you choose full-color printing or printing with black toner only.

The following color modes are available:

Color (CMYK)

This mode prints full four-color text and graphics.

Black & White

Use this mode to print with black only, constraining all color settings. Click **Adjustment** to change the **Adjustment settings**.

Printer Profile

Printer profile lets you optimize the color rendering of photos and graphics. This feature is available when **Color (CMYK)** is selected as the **Color mode**.

The following printer profiles are available:

Printer settings

This option uses the printer settings only.

Text and Graphics

This option is for printing documents that contain many graphs, charts or drawings.

Text and Photos

This option is for printing documents with many photographic images.

Vivid colors

This option increases the color saturation of graphics and photos.

Publications

This option is for printing a mix of graphics and/or photos. Select this option to print close to the color shade of the screen.

Line art

This option is for printing figures or graphics drawn with lines. Select this option to print colored lines with pure simple color.

Advanced

This option achieves greater consistency in color reproduction among various devices. It compensates for the different color spaces of color printing systems. Selecting and applying a set of profiles is called a color profile.

Color Correction

The **Color Correction** feature alters the colors in an image in order to print it properly. It attempts to match the colors of the original image to the printer's colors. ICM is Microsoft's Image Color Management, the standard for Windows.

The following options are available in the **Color Correction** dialog box:

None (application corrected)

With this option, color data processes without applying the adjustments contained in the printing system's internal color lookup tables. Ink simulation will not be executed. This is useful if the application provides its own color correction.

ICM (system corrected)

This option specifies color rendering in the print job to make it as close to the original as possible. ICM technology relies upon associating an output device like a printing system with a Color Profile. An ICM Profile for a printing system contains information about rendering accurate color information for that device. The settings for ICM must be set in the Color Management tab in the printing system Properties.

Selecting Color Correction

In **Printer profile**, the **Advanced** option provides some methods for controlling how the printer processes color matching.

- 1 From **Printer profile**, select **Advanced**. The **Color Correction** dialog box appears.

If you select the **None (application corrected)** option, click **OK** to close the **Color Correction** dialog box.

If you select the **ICM (system corrected)** option, click **ICM Settings**, and proceed to step 2.

- 2 In the **ICM Settings** dialog box, select a **Rendering intent** option, then click **OK** to save the selection.

Optimize for exact color (Colormetric)

This option is for matching colors precisely in all print jobs, such as colors in a corporate logo.

Optimize for color contrast (best for images)

This option optimizes for color contrast by adjusting contrast to preserve detail throughout the tonal range. Select it for images or scanned photographs containing many colors or shades of color.

Optimize for color saturation (best for graphs)

This option optimizes for color saturation by adjusting hue to preserve the vividness of pure colors. Select for graphs or charts containing solid colors.

- 3 Click **OK** again to close the **Color Correction** dialog box.

Setting a Default Color Profile in Windows XP

When using the ICM (system corrected) feature in the **Color Correction** dialog box, you can set a color profile for your printing system.

- 1 Open the **Printers and Faxes** folder.

- 2 Right-click on the desired color printer.
- 3 Select **Properties**.
- 4 Select the **Color Management** tab.
- 5 Click **Add**.
- 6 In the **Add Profile Association** dialog box, select a color profile from the list and click **Add**.
- 7 In the **Color Management** tab, select **Manual**.
- 8 Select the desired color profile from the list and click **Set as Default**.
- 9 Click **OK**.

Setting a Default Color Profile in Windows Vista

When using the ICM (system corrected) feature in the **Color Correction** dialog box, you can set a color profile for your printing system.

- 1 Open the **Printers** folder.
- 2 Right-click on the desired color printer and select **Properties**.
- 3 Select the **Color Management** tab.
- 4 Click **Color Management** to open the **Color Management** dialog box.
- 5 Select the **Device** tab.
- 6 In the **Device** list, select the desired color printer.
- 7 Select **Use my settings for this device**.
- 8 In the **Profile selection** list, select **Manual**.
- 9 Click **Add**, to open the **Associate Color Profile** dialog box.
- 10 Select an ICC profile, or click **Browse** to find a profile, and click **OK**. The profile is added to the **Profiles associated with this device** list.
- 11 Select the desired color profile and click **Set as Default Profile**.
- 12 Click **Close**.

Adjusting Color

Color Adjustment enables you to customize the two color spaces in the driver and save up to three custom groups. Color space changes can be made to red, green, blue (RGB) levels or to hue, saturation and lightness (HSL).

- 1 In the **Imaging** tab, in **Color mode**, select **Color (CMYK)**.
- 2 In the **Adjustment** list, select **Custom 1**, **Custom 2**, or **Custom 3**, if you have already defined color settings. If you have not defined color settings, select **Edit** to open the **Adjustment Settings** dialog box.
- 3 From the **Custom color adjustment** list, select **Custom 1**, **Custom 2**, or **Custom 3**.
- 4 To open the **Custom Color Adjustment** dialog box, click **Settings**.
- 5 Select **HSL (hue, saturation and lightness)** or **RGB** (red, green, blue) to work with as the color space.
- 6 Click the arrow buttons beneath the photograph to select one of three different images. Different colors are emphasized in each of the photographs to aid in the color adjustment process.

Adjusting HSL (Hue, Saturation, Lightness)

HSL controls adjust the full spectrum, brightness, contrast, and vividness of the color.

- 1 Under **Select color space**, select **HSL (hue, saturation and lightness)**.
- 2 Adjust the distribution and balance of hues.
 For coordinated hue adjustment, from the **Modify** list select **Master**. Drag the **Hue** slider to the right or left to increase or decrease the value between -180 and +180.
 For specific hue adjustment, from the **Modify** list select **Red**, **Yellow**, **Green**, **Cyan**, **Blue**, or **Magenta**. Drag the **Hue** slider to the right or left to increase or decrease the value between -10 and +10.
 The upper color bar indicates the adjustment made when the slider is dragged, or a value is typed in the box. The horizontal brackets around the upper color bar show the range of the color bar affected by the adjustment.
 The lower color bar provides a reference point to the color bar above it for **Hue Adjustment**.
- 3 Drag each slider to adjust the **Saturation**, **Lightness** and **Contrast** between -10 and +10. You can also type values in the boxes.
- 4 If you want to return all HSL settings to zero, click **Reset**.
- 5 Click **OK** to save the new HSL settings.

Adjusting RGB (Red, Green, Blue)

RGB adjusts only the relative values of the colors red, green, and blue.

- 1** Under **Select color space**, select **RGB**.
- 2** Under each bar, drag the slider to adjust the relative values of **Red**, **Green**, and **Blue** between -10 and +10. You can also type values in the boxes.
- 3** If you want to return all RGB settings to zero, click **Reset**.
- 4** Click **OK** to save the new RGB settings.

Adjusting Grayscale

The Adjustment settings change the **Brightness** and **Contrast** of graphics. These settings are useful if graphic images are printing too light, too gray, or too dark. Text remains unaffected.

- 1** In the **Imaging** tab, in **Color mode**, select **Black & White**.
- 2** In the **Adjustment** list, select **Custom**.
A preview image in the **Adjustment Settings** dialog box illustrates any brightness and contrast changes.
- 3** Drag the **Brightness** slider right to lighten, or left to darken the graphic images of the print job.
You can also change brightness by entering a numeric value in the text box at the right. The brightest setting is +100; the darkest is -100. Zero is the default mid-level setting. Adjusting brightness is useful when graphic images are printing too dark or too light.
- 4** Drag the **Contrast** slider right or left to increase or decrease proportion of light to dark in the graphic images of the print job.
A high contrast setting decreases the grayscale spectrum, making light grays lighter and dark grays darker. A low contrast setting increases the grayscale spectrum, making light grays darker and dark grays lighter.
You can also change contrast by entering a numeric value in the text box at the right. The highest contrast setting is +100; the lowest is -100. Zero is the default mid-level setting. Adjusting contrast is useful if graphic images are printing too gray, or too black and white.

Text and Graphics Effects

Print text as black

This option prints all color text as black. It produces faster printing of color print jobs by reducing the amount of data sent to the printer. In Black & White printing, it increases the detail for light-colored text printed. White text and image colors are unaffected. Available with all of the **Color mode** options.

Continuous tone

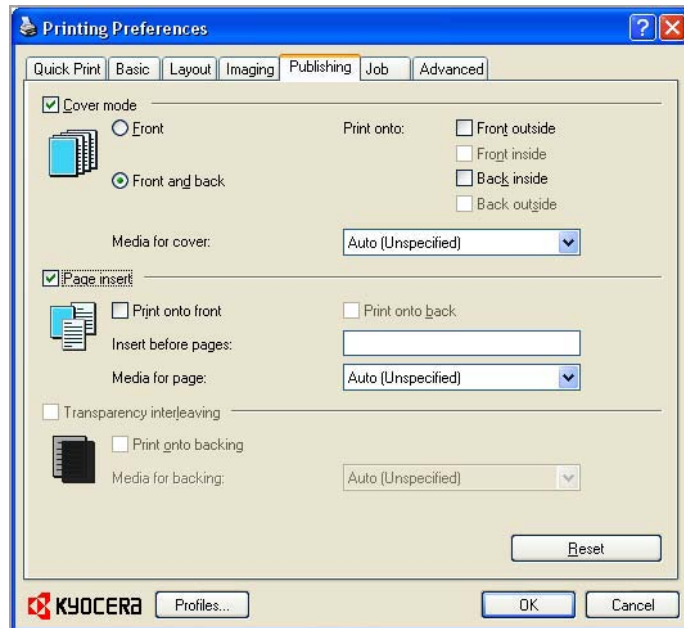
Images are represented by a series of evenly graduated tones, as in a photograph. **Color (CMYK)** must be selected as the **Color mode**.

Print graphics as black

This option prints all color graphics and text with black, rather than grayscale. This feature is implemented for CAD applications. **Black & White** must be selected as the **Color mode**.

7 Publishing

In the **Publishing** tab, you can create covers, inserts, and add transparencies for a print job.



Cover Mode

Cover mode is a feature for adding cover pages for the front and back of your document. You can print on cover pages of a different weight or color than the main document. The source of the cover paper is specified by adjusting the **Media for cover** settings in the **Publishing** tab.

Print on both sides must be selected in the **Basic** tab in order to print using the **Front inside** or **Back outside** options.

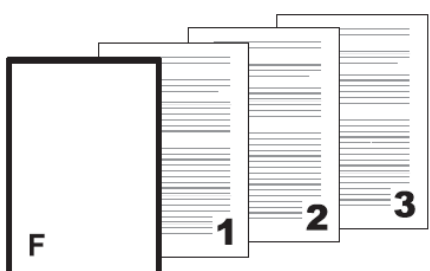
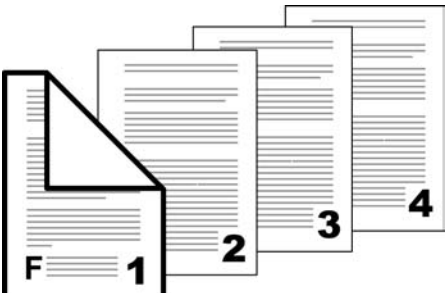
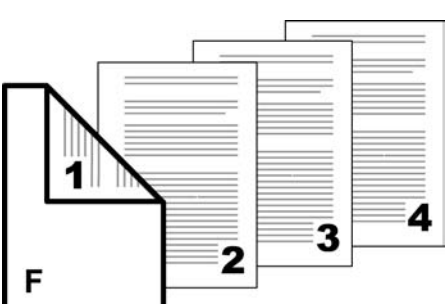
Although **Cover mode** and **Page insert** may be used simultaneously, they cannot be used with **Transparency interleaving**.

Printing Covers

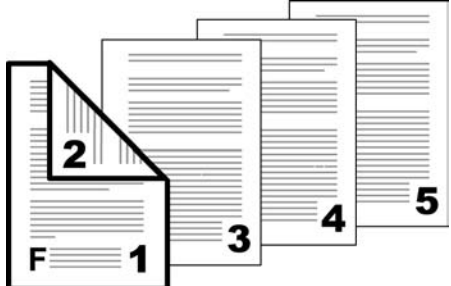

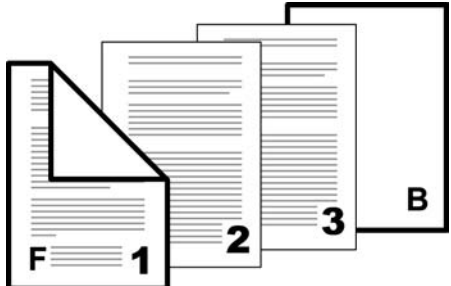
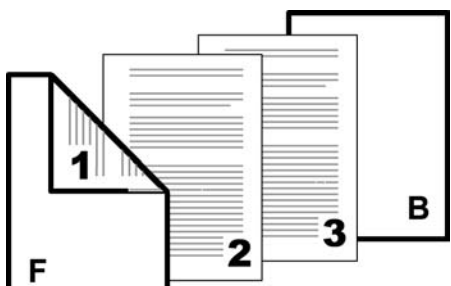
- 1 In the **Publishing** tab, select **Cover mode**.

- 2 Select **Front**, **Front and back**, or the **Print onto** options to specify what type of covers to print.
- 3 Select the **Media for cover** to specify what type of paper or other media to use for the covers.

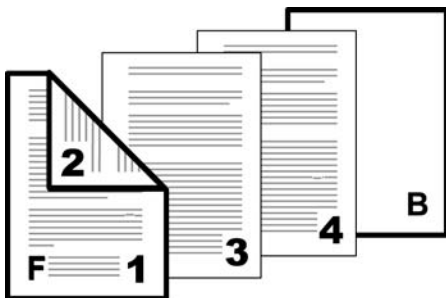
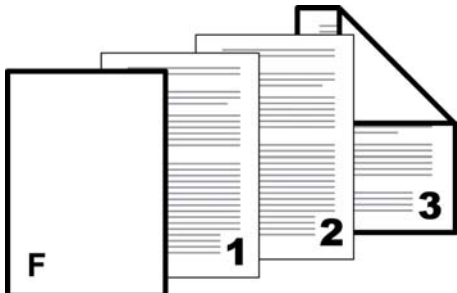
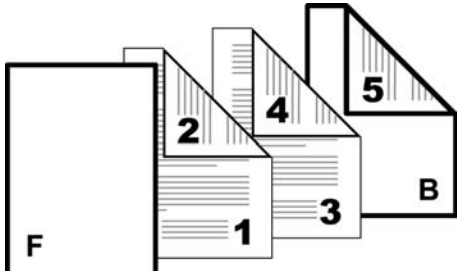
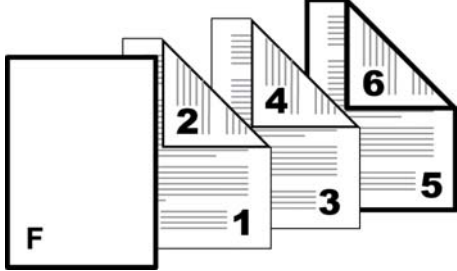
Cover Mode Options

Check Box Selection	Cover Insertion Type
Front	Inserts a blank front cover. 
Front Front outside	Prints on the outside surface of the front cover. 
Front Front inside	Prints on the inside surface of the front cover. 

— continued

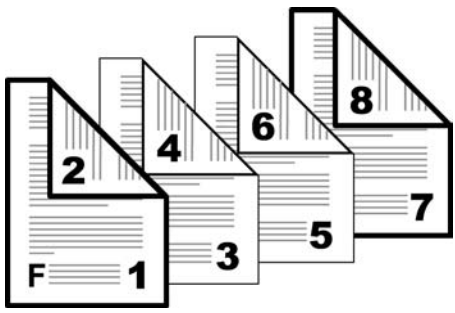
Check Box Selection	Cover Insertion Type
<p>Front</p> <p>Front outside</p> <p>Front inside</p>	<p>Prints on the outside and inside surfaces of the front cover.</p> 
<p>Front and back</p>	<p>Inserts blank front and back covers.</p> 
<p>Front and back</p> <p>Front outside</p>	<p>Prints on the outside surface of the front cover and inserts a blank back cover.</p> 
<p>Front and back</p> <p>Front inside</p>	<p>Prints on the inside surface of the front cover and inserts a blank back cover.</p> 

— continued

Check Box Selection	Cover Insertion Type
Front and back Front outside Front inside	Prints on both sides of the front cover and inserts a blank back cover. 
Front and back Back inside	Prints on the inside surface of the back cover and inserts a blank front cover. 
Front and back Back outside	Prints on the outside surface of the back cover and inserts a blank front cover. 
Front and back Back inside Back outside	Prints on both sides of the back cover and inserts a blank front cover. 

— continued

Check Box Selection	Cover Insertion Type
Front and back	Prints on both sides of the front and back covers.
Front outside	
Front inside	
Back inside	
Back outside	



Choosing Cover Media

- 1 In the **Media for cover** list, select the media type or source cassette for the front and back covers.
When you choose the media type, a source cassette matching that media type is automatically selected.
- 2 Click **OK** to return to the **Print** dialog box.
- 3 Click **OK** to start printing.

Page Insert

A **Page insert** is a preprinted page or a page of a different paper type that is inserted at specified points in a print job. The inserted page can also be printed on during the print job. Both sides of the page insert can be printed on by using the duplex unit.

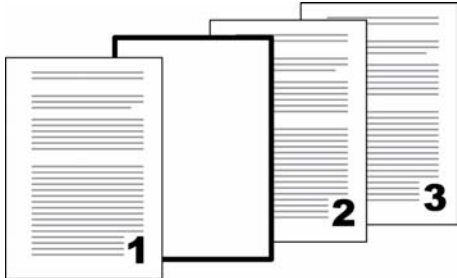
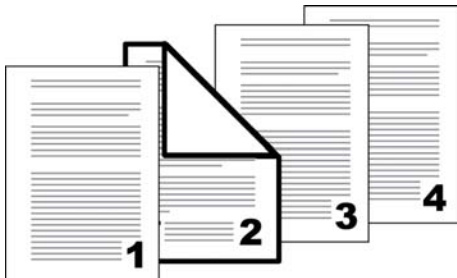
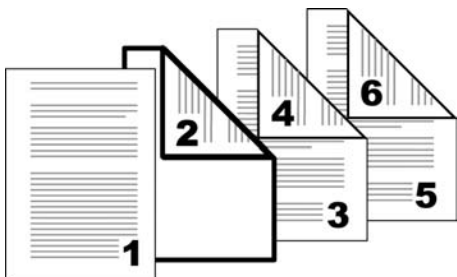
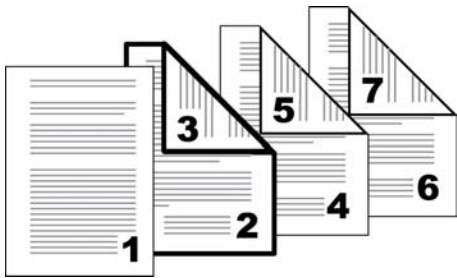
Although the **Page insert** and **Cover mode** options can be used together, neither of them can be used with **Transparency interleaving**.

Printing Page Inserts

There are several ways to arrange page inserts: you can print on one, both, or neither side.

- 1 In the **Publishing** tab, select the **Page insert** check box.
- 2 Select the option corresponding to your desired page arrangement.
- 3 To print on both the front and back of the inserted page, select the **Print onto front** and **Print onto back** check boxes.

Page Insertion Options

Check Box Selection	Page Insertion Type
Page insert	Inserts a blank page. 
Page insert Print onto front	Prints on the front side of the inserted page. 
Page insert Print onto back	Prints on the back side of the inserted page. 
Page insert Print onto front Print onto back	Prints on both sides of the inserted page. 

Transparency Interleaving

Transparency interleaving inserts a backing sheet between printed transparencies. The backing sheet, also known as an interleaf, helps keep transparencies clean and prevents them from clinging together. This feature is

only available when printing on transparencies supplied from the MP tray. You can print the same content on the backing pages as on the transparencies.

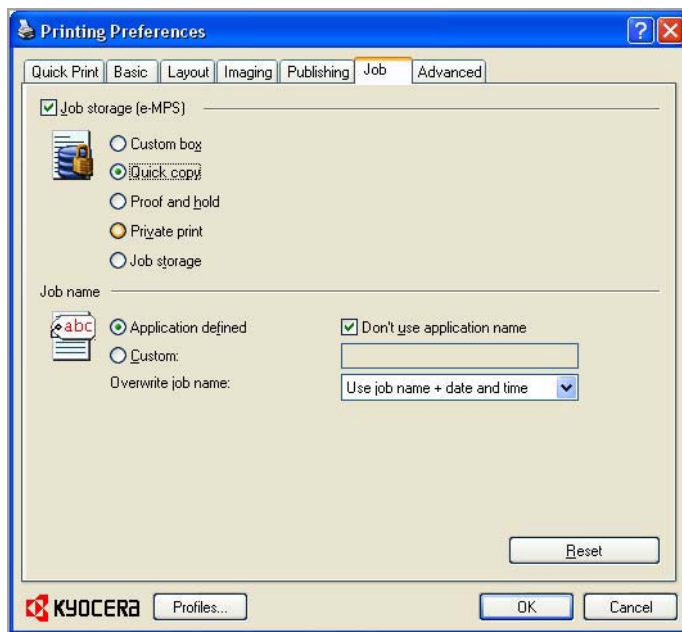
Transparency interleaving cannot be used together with **Cover mode** or **Page insert**.

Interleaving Transparencies

- 1** In the **Basic** tab, in the **Media type** list, select **Transparency**. If the **Source** and **Media type** lists have been combined (by a selection in the **Device Settings** tab, in the **Compatibility Settings** dialog box), **Media type** does not appear. Instead, in the **Source** list select **Auto (Transparency)**.
- 2** Click the **Publishing** tab.
- 3** In the **Publishing** tab, select the **Transparency interleaving** check box. To print the transparency content on the inserted pages as well, select the **Print onto backing** check box.
- 4** In the **Media for backing** list, select the **Media type** of the backing sheet or the **Source** paper cassette. When you choose the **Media type**, the **Source** cassette where that media is loaded is automatically selected.
- 5** Click **OK** to begin printing.
The printing system's operation panel prompts you to load transparencies into the MP tray, and, if necessary, load backing paper into the selected cassette.

8 Job

In the **Job** tab, you can store print jobs in the memory installed in the printing system. You can also select a **Job name** to use with Job storage features. You can use this tab to set or change the default settings that apply when you print a document from a Windows application.



Job Storage (e-MPS)

Job storage (e-MPS) offers a set of options for saving print jobs in printing system memory, so that you can print or reprint them later. Print jobs can easily be reprinted later using the printing system's operation panel, and printing of sensitive documents can be restricted to approved users.

E-MPS is a multitier solution that provides advanced print management, directly from the desktop. By storing a job in the printing system, you can print it from the operation panel without sending it again from the computer.

To use the **Job storage (e-MPS)** features, you must set a user name in the **User Settings** dialog box, available in the **Device Settings** tab.

Job Storage (e-MPS) options

	Storage location	Access code required	When job is printed	When job is deleted from memory	Operation panel e-MPS location
Custom box	Hard disk	Optional password	When printed from operation panel	When manually deleted or up to 31 days	Custom Box / Select Box
Quick copy	Hard disk	No	When sent from the computer	When printing system is turned off or hard disk is full	Job Box / Quick Copy
Proof and hold	Hard disk or RAM disk	No	One copy when job is sent; remaining copies later	When printing system is turned off	Job Box / Quick Copy
Private print	Hard disk or RAM disk	Yes	When access code is entered at operation panel	When printing system is turned off or after printing	Job Box / Private/Stored
Job storage	Hard disk	Optional	When printed from operation panel	When manually deleted	Job Box / Private/Stored

Custom Box

Custom Box lets you send print jobs to **Custom Box** on the hard disk, where print jobs are stored until they are printed from the printing system's operation panel. You can print one or more jobs from the hard disk.

Print jobs can be deleted after printing or saved on the hard disk for 1-31 days.

Custom boxes must be set up for each user at the printing system's Command Center and in the **Hard Disk Settings** dialog box, accessed from the **Device Settings** tab. The maximum number of custom boxes is 1000.

Note: [Custom box is not available for some models.](#)

Storing a Job in a Custom Box

After custom boxes are assigned, you can send print jobs to custom boxes, where print jobs are stored on the printing system's hard disk.

- 1** In the **Job** tab, select **Job storage (e-MPS)**, then select **Custom box**.
- 2** Click **Settings**.
- 3** Select a **Custom Box Settings** option:
 - Select **Use specific box number**, and type the box number and password.
 - Select **Prompt for box number**, and click **OK**. When the **Custom Box** dialog box appears, type a box number. If a password was set, type the password.

Select **Display box number list**, and click **OK**. When the **Custom Box** dialog box appears, select a box from the list. If a password was set, type the password.

Select **Verify box number for each login user**, and click **OK**. When the **Custom Box** dialog box appears, type a box number. To include a password, select **Require password** and type the password.

With **Verify box number for each login user** selected, the driver searches for a login user name from the custom box list to serve as the custom box name:

If a match is found, the custom box is used for the print job.

If a match is not found, the driver checks for administrator or user permissions. With administrator permissions, you will be prompted to type a box number and optional password for the print job. The driver searches for a Windows login user name and adds this name with the box number and password to the custom box list in the driver. With user permissions, the print job is canceled. You will be prompted to contact an administrator to establish printing permissions.

Quick Copy

Quick copy is a **Job storage (e-MPS)** option that prints all copies of a print job and stores the job temporarily on the hard disk for reprinting later. This feature is available when a hard disk is installed and selected in the **Device Settings** tab.

Quick copy is useful for printing the job again later in the day when you need additional copies at short notice. You can set the number of additional copies, and print the job from the printing system's operation panel without sending the job again from the computer.

The number of **Quick copy** or **Proof and hold** jobs that can be stored is set at the printing system's operation panel, to a maximum of 50 jobs. When the designated number of jobs is reached, older jobs are replaced by new jobs. All **Quick copy** jobs are stored on the hard disk after printing but are deleted when the printing system is turned off. You can manually delete a job at the operation panel.

Warning: A print job can replace a job on the hard disk having the same user name and job name. To prevent this, select **Use job name + date and time** under **Overwrite job name**.

Printing a Quick Copy Job

With a hard disk installed, **Quick copy** lets you print a document and save it in the printing system until the job is manually deleted or the printing system is turned off.

- 1 In the **Job** tab, select **Job storage (e-MPS)**.
- 2 Select **Quick copy**, and then click **OK** in both dialog boxes to print.

For example, use **Quick copy** when you print copies for a meeting later in the day. If you learn at the last minute that additional copies are needed, you can print them quickly using the printing system's operation panel without sending the job again from your computer.

Proof and Hold

Proof and hold is a **Job storage (e-MPS)** option that prints one copy of a print job so that you can proof it before printing the remaining copies. This feature is available when a hard disk is installed in the printing system, or RAM disk enabled, and selected in the **Device Settings** tab.

After the proof copy is printed and checked, remaining copies can be printed from the printing system's operation panel without sending the job again from the computer. If desired, you can change the number of copies printed.

Note: **Proof and hold** is not available for some applications such as Microsoft Excel.

The number of **Proof and hold** or **Quick copy** jobs that can be stored is set at the printing system's operation panel, to a maximum of 50 jobs. When the designated number of jobs is reached, older jobs are replaced by new jobs. All **Proof and hold** jobs are stored on the hard disk after printing but are deleted when the printing system is turned off. You can manually delete a job at the operation panel.

Warning: A print job can replace a job on the hard disk having the same user name and job name. To prevent this, select **Use job name + date and time** under **Overwrite job name**.

Printing a Proof and Hold Job

Proof and hold lets you print one copy of a multicopy job to proof before printing the remaining copies. The job is stored on the hard disk until the printing system is turned off or the job is manually deleted.

- 1 In the **Basic** tab, select the number of copies to be printed.
- 2 Open the **Job** tab.
- 3 Click **Job storage (e-MPS)**.
- 4 Click **Proof and hold**, and click **OK**.

Private Print

Private print jobs are saved on the hard disk or RAM disk for printing until a four-digit access code is entered. When the hard disk reaches maximum capacity and a new job is sent to be stored, the oldest stored job is replaced by the new job. **Private print** jobs are deleted when the printing system is reset or turned off. If you do not want the job deleted, select the **Job storage** feature.

When sending a sensitive document to the printing system, a user must type a four-digit access code, which is attached to the print job along with the job name and user name. The job is not printed until a user enters the access code at the printing system's operation panel. After the job is printed, it is removed from printing system memory.

The number of **Private print** jobs that can be stored is limited only by the storage capacity of the hard disk. You can manually delete a job at the operation panel.

Warning: A print job can replace a job on the hard disk having the same user name and job name. To prevent this, select **Use job name + date and time** under **Overwrite job name**.

Storing a Private Print Job

Private print lets you store a document temporarily in printing system memory without printing, and protect it with an access code. The job is stored on the hard disk until it is printed, manually deleted, or turned off.

- 1 In the **Job** tab, select **Job storage (e-MPS)**.
- 2 Select **Private print**.
- 3 In the **Access code** box, type four numbers if you want to restrict access to your document.
- 4 Click **OK**.

Job Storage

Job storage is a **Job storage (e-MPS)** option that lets you store a print job permanently on the hard disk for printing later. You also have the option of protecting the print job from unauthorized printing by using an access code. This feature is available when a hard disk is installed and selected in the **Device Settings** tab.

Job storage is useful for jobs that need to be available for printing at any time, even if the printing system has been turned off and turned on again. **Job storage** jobs can only be removed manually from printing system memory.

If desired, you can attach a four-digit access code to a **Job storage** job, so that you can print a job without anyone else seeing it, or restrict printing to approved users. When the access code is used, the job is not printed until a user prints it at the printing system's operation panel. After the job is printed, it remains in printing system memory.

The number of **Job storage** jobs that can be stored is limited only by the storage capacity of the hard disk. You can manually delete a job at the operation panel.

Warning: A print job can replace a job on the hard disk having the same user name and job name. To prevent this, select **Use job name + date and time** under **Overwrite job name**.

Storing a Job Storage Job

Job storage lets you store a document permanently in printing system memory without printing, and gives you the option to protect it with an access code. This job remains on the hard disk until it is manually deleted.

- 1 In the **Job** tab, click **Job storage (e-MPS)**.
- 2 Click **Job storage**.

- 3 If you want to restrict access to your document, and type four numbers in the **Access code** box.
- 4 Click **OK**.

Job Name

A **Job name** is a unique identifier for each print job. It helps you find and print your job from the printing system's operation panel. When you send a print job using one of the **Job storage (e-MPS)** options, you can assign a custom name to the job or use the name of the application file.

For Microsoft Word and PowerPoint, you can choose to include or omit the application name from the application defined job name. You can also ensure that jobs in printing system memory are not replaced by new jobs having the same job name.

Don't Use Application Name

Don't use application name is an option to remove the application name from the job name in job storage features. By selecting **Don't use application name**, the file name you choose appears clearly in the job list. This feature is applicable only when printing from Microsoft Word or PowerPoint.

Overwrite Job Name

Overwrite job name is an option to ensure that a saved print job is not replaced in printing system memory by a new job having the same job name. If a user sends two print jobs with the same user name and job name, the second job replaces the first job without any prompt. To prevent this, **Overwrite job name** can automatically change the job name by adding the date and time the job is sent. This feature also helps you to track when print jobs were sent from the computer.

The selected option applies to a job name with either **Application defined** or **Custom** selected. **Overwrite job name** options include:

Replace existing file

This option lets the current print job replace an existing job in printing system memory, if a job with the same user name and job name exists.

Use job name + date and time

This option adds the current date and time to the end of the job name, in the format: mmddyy hhmms.

Selecting a Job Name

You must select a job name to use with **Job storage (e-MPS)** features, so that you can find your job in job lists on the printing system's operation panel. The selected job name is saved with the print job when the job is sent to printing system memory.

- 1 In the **Job** tab, select **Job storage (e-MPS)**.
- 2 Under **Job name**, select a name:

Application defined

This option uses the name of the application document as the job name. For Microsoft Word or PowerPoint documents, selecting **Don't use application**

name removes the name of the application so that only the document name appears as the job name.

Custom

This option uses a unique name for each job. Type a name in the box, up to 79 characters.

- 3** Select an **Overwrite job name** option in case a job already exists in printing system memory with the same job name:

Replace existing file

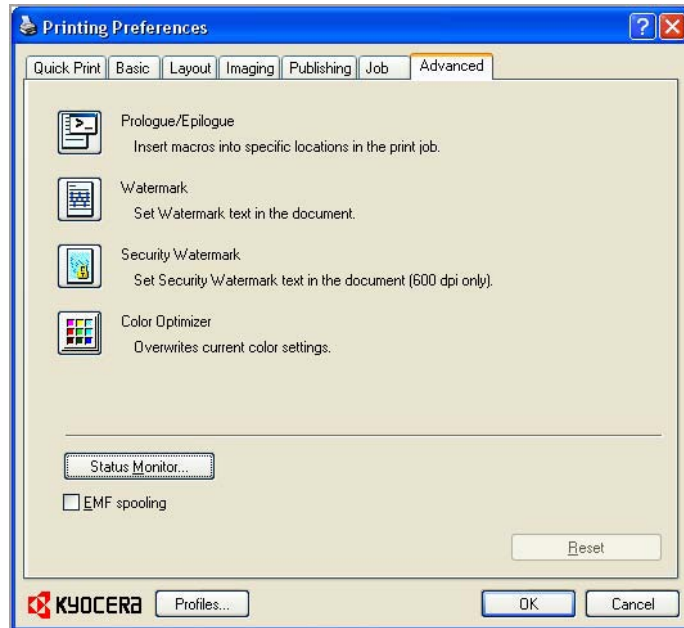
If a job with the same user name and job name exists, the current print job replaces an existing job in printing system memory.

Use job name + date and time

Adds the current date and time to the end of the job name, in the format: mmddy hhmss

9 Advanced

In the **Advanced** tab, you can choose special features that extend the capabilities of the printing system.



Prologue/Epilogue

The **Prologue/Epilogue** feature enables a user to insert a command file at the beginning of a print job or at the end. The command file, prepared in a text editor, utilizes programming commands from the printer resident PRESCRIBE language. The **Product Library CD** includes a PRESCRIBE command language reference guide. A command file is a set of instructions the printing system interprets to produce a given output. For example, a **Prologue/Epilogue** command file may contain a macro that places a graphic object such as a logo at the top of a letterhead document.

Selecting a Prologue/Epilogue File

A **Prologue/Epilogue** file must be available on your system before it can be added to a print job. To create this file, use a text editor like Windows Notepad.

In the **Prologue/Epilogue** dialog box, select a **Prologue/Epilogue** file to insert into the print job. (If no file names are visible in the list, you must click **Add** to browse for files on your computer or network to add to the list.) After the file is selected, insertion point options will be enabled.

Editing a Prologue/Epilogue File

- 1 In the **Prologue/Epilogue** dialog box, select a command file name from the list, and then click **Edit**. Microsoft Notepad opens for editing the text file.
- 2 Make your changes to the file.
- 3 Save the file, and exit Microsoft Notepad.

Note: Editing and saving a command file overwrites the contents of the existing local or network file.

Deleting a Prologue/Epilogue File

- 1 In the **Prologue/Epilogue** dialog box, select a **Prologue/Epilogue** file name from the list, and then click **Delete**.
- 2 In the delete confirmation box, click **Yes** to accept.

Note: Only the file name is removed from the command file list. The file itself is not deleted, but remains on the network or local computer.

Assigning a Prologue/Epilogue File

- 1 In the **Prologue/Epilogue** dialog box, select a **Prologue/Epilogue** file name from the list.
- 2 Under **Insertion Point**, select a place to insert the **Prologue/Epilogue** file.

Unassigning a Prologue/Epilogue File

When you designate a **Prologue/Epilogue** file as unassigned, you are removing it from the print job. It remains in the list. Unassigned selections are useful when the list contains several **Prologue/Epilogue** files, and you want to use some but not others.

- 1 In the **Prologue/Epilogue** dialog box, select a **Prologue/Epilogue** file name from the list.
- 2 Under **Insertion Point**, select **Unassigned**.

Specifying the Insertion Point

The insertion point is the location in the print job where the selected **Prologue/Epilogue** command file is processed by the printing system. Each file in the list can be assigned only one insertion point.

Note: The **Start of the page** and **End of the page** insertion point options are available only when **PCL 5c** is selected as the Page Description Language (PDL).

With a command file selected in the list, choose one insertion point option:

Unassigned

The selected command file is not inserted into the print job. This selection can be used when you are working with multiple command files and want to use some but not others. Select **Unassigned** for the command files you do not want to use in the print job.

Beginning of the print job

The command file is inserted as the first page of the print job. The document starts printing on the second page.

End of the print job

The command file is inserted as the last page of the print job, which prints after the last page of the document.

Start of the page

The command file is inserted at the top of each page of the print job.

End of the page

The command file is inserted at the bottom of each page of the print job.

Only on odd pages

If **Start of the page** or **End of the page** is selected, this option can be selected to insert the command file into all odd-numbered pages.

Only on even pages

If **Start of the page** or **End of the page** is selected, this option can be selected to insert the command file into all even-numbered pages.

Pages

If **Start of the page** or **End of the page** is selected, this option can be selected to insert the command file into specified pages. In the text box, type individual page numbers separated by commas, or a page range separated by a hyphen. For example, if you type 2 in the text box, the command file is inserted only into page 2. If you type 1, 3, 5-12 the command file is inserted into page 1, page 3, and pages 5 through 12. If the **Pages** option is selected and you click **OK** without typing any numbers, you will be prompted to specify page numbers.

Watermark

A watermark is a recognizable image or pattern that can be placed on a page or throughout a document. You can choose one of the standard watermarks or create your own text. The preview area at the left of the dialog box shows how the watermark appears on a page. This is useful for making adjustments to the appearance and location of the watermark.

Adding or Editing a Watermark

You can create a new watermark that displays your chosen text. Any watermark can be edited, though a limited number of options can be changed for default watermarks.

- 1 In the **Advanced** tab, click **Watermark**.
- 2 In the **Watermark** dialog box, click **Add** to create a user defined watermark; or under **Select watermark**, select a default or custom watermark and click **Edit**.
- 3 Under **Watermark name**, type a name, up to 39 characters. A default watermark cannot be renamed.
- 4 Under **Watermark text**, type your preferred text. This option is not available when editing a default watermark.
- 5 Select the desired font, style, and size of the text.
- 6 Select the color of the watermark from the list of default colors. For custom colors, select **Custom**, and click the button to open the **Color** dialog box. Click one of the **Basic** colors and click **OK**, or click **Define Custom Colors** to open and select from the color spectrum panel.
- 7 Select the watermark **Count**, to a maximum of 20. In the **Spacing** spin box, select the distance between two or more watermarks in tenths of an inch or in millimeters.
 - 8 Select the **Position** of the watermark with one of the following options.
 - Centered [default]**

This option places the center of the watermark text in the center of the page.
 - User defined**

This option lets you manipulate the x and y coordinate boxes to move the text around the page.

You can also change the position by clicking the position button at the bottom of the preview area. Click and hold as you drag the pointer to move the watermark image.
 - 9 Select the **Angle** of the watermark with one of the following options.
 - Diagonal [default]**

This option places the watermark text at the default angle on the page.
 - User defined**

This option lets you type a degree value for the angle. An angle is measured in degrees, from 0 to 360.

You can also change the angle by clicking the angle button at the bottom of the preview area. Click and hold as you drag the pointer to move the watermark image.
 - 10 The **Rotate around center** check box at the bottom far right of the dialog box determines the method of rotation for the watermark. You must select **User**

defined in both **Position** and **Angle** to enable this option. Select **Rotate around center** to position the watermark text with the center of the text as its axis, and clear it to position the watermark text with the left end of the text as its axis.

- 11 In all dialog boxes, click **OK**.

Page Selection for Watermark

The Page Selection option for **Watermark** enables you to choose the location for watermarks in your document.

- 1 In the **Advanced** tab, click **Watermark**.
- 2 In the **Watermark** dialog box, under **Select watermark**, choose a default or custom watermark to print.

- 3 Under **Page selection**, choose pages for printing the watermark:

All pages

This option prints the watermark on each document page.

First page only

This option prints the watermark on the first document page.

All pages except first page

This option prints the watermark on all pages after the first page.

Only on specified pages

This option prints the watermark on page numbers typed in the box.

Print onto front outside cover

This option prints the watermark on the front cover. It is available when **Cover mode** is selected in the **Publishing** tab. If **Cover mode** and **Front outside** are both selected in the **Publishing** tab, **Print onto front outside cover** is selected automatically.

- 4 In all dialog boxes, click **OK**.

Security Watermark

The **Security Watermark** is a plug-in feature that prints a nearly invisible image or text against a background pattern. The security watermark appears only when the printed page is photocopied. This helps to identify printed pages that should not be photocopied, or to distinguish between original prints and photocopies. Six standard security watermarks are available as text or image, and you can create custom security watermark text.

Note: **Security Watermark** is not available for some models.

A notable feature of **Security Watermark** is the **Document guard pattern**, which prevents the document from being photocopied, scanned, faxed, or printed from memory. If a scan, fax, or print from memory is attempted, the process is stopped and an error message appears on the printer's operation panel.

The **Optional Printer Components** wizard offers the opportunity to install the **Security Watermark** plug-in following installation of the printer driver.

Security Watermark appears in the **Advanced** tab after selecting **Device Settings > PDL > Select PDL > PCL XL**.

The administrator can ensure that a security watermark is printed on all jobs by selecting **Device Settings > Administrator > Lock Security Settings**.

Selecting **Security Watermark** sets these driver features to the following values:

Watermark in the **Advanced** tab is set to **Off**.

Resolution in the **Imaging** tab is set to 600 dpi.

EcoPrint in **Imaging > Quality** is set to **Off**.

Adjustment setting (color or black & white) is set to **None** in the **Imaging** tab.

The reverse is also true. If these features are changed, then the **Security Watermark** selection is set to **None**, and cannot be used.

Adding or Editing a Security Watermark

You can create a new security watermark that displays text but not an image. Any security watermark can be edited, though a limited number of options can be changed for default security watermarks.

- 1 In the **Advanced** tab, click **Security Watermark**.
- 2 In the **Security Watermark** dialog box, click **Add**, to create a new watermark; or under **Select security watermark**, select a default or custom security watermark and click **Edit**.
- 3 For **Security watermark name**, type a name up to 39 characters. A default security watermark cannot be renamed.
- 4 For **Security watermark text**, type text or leave blank. This option is not available when editing a default security watermark. Select from the following options:
 - None**
This option leaves the line blank.
 - User defined**
This option inserts your text up to 39 characters.
All other options display date, time, or other job information that is obtained from the computer or printer driver when the job is printed.
- 5 Select the desired font, size, style, and angle of the text.
- 6 Select **Print as footer also** if you want the first available line of watermark text to be printed at the bottom of the page. Select the page position from the list. This option is useful because the security watermark itself is not normally visible on the printed page.
- 7 Under **Background pattern**, select a design for the security watermark background.

Standard pattern

Select a design for the security watermark background. This option prints the selected pattern with the watermark text or image.

Document guard pattern

The document guard design appears as the security watermark background. This option prevents the printed page from being photocopied, scanned, faxed, or printed from memory. If a photocopy is attempted, then gray copy is produced. If a scan, fax or print from memory is attempted, the process is stopped and an error message appears on the printing system's operation panel.

- 8 Select a **Watermark color** for the security watermark from the list. The options are **Black**, **Cyan**, or **Magenta**.
- 9 Select **Overprint** for applications such as Microsoft PowerPoint and Internet Explorer where the document content fills the entire page. The security watermark is printed over the document data so that it can appear in a photocopy. (This function is activated by default.)
- 10 Adjust the calibration. After adjusting calibration, in all dialog boxes click **OK**.

Adjusting Security Watermark Calibration

For a security watermark to be effective, it must be nearly invisible in a printed page and clearly visible in a photocopied page. Because printing systems and driver settings can vary, you must adjust the calibration before printing a security watermark. Adjusting the calibration is also recommended when changing the background pattern, replacing the toner or printing system, and after heavy printing activity.

- 1 After all security watermark options are selected in the **Add Watermark** or **Edit Watermark** dialog box, click **Adjust Calibration**.
- 2 Under **Pattern shading** and **Text contrast**, select initial options:
 - Light, Normal, Dark**
Select the shading density of the background pattern.
 - Contrast 1-9**
Select the level of contrast against the background pattern, from lightest to darkest.These selections may need to be changed after printing a sample in the next step.
- 3 Click **Print Sample** to print a page displaying all nine contrast options against the selected pattern shading. It is recommended to print a sample page for each pattern shading option.
- 4 From the **Text Contrast Sheet**, find the sample where the security watermark is most nearly invisible.
- 5 In the **Adjust Calibration** dialog box, select options to match the sample chosen in step 4.

- 6 In all dialog boxes, click **OK**.

Page Selection for Security Watermark

The **Page selection** options for security watermark determine where the security the watermarks will be placed in the print job.

- 1 In the **Advanced** tab, click **Security Watermark**.
- 2 In the **Security Watermark** dialog box, under **Select security watermark**, choose a default or custom security watermark to print.
- 3 Under **Page selection**, choose pages for printing the security watermark:
 - All pages**
This option prints the security watermark on each document page.
 - First page only**
This option prints the security watermark on the first document page.
 - All pages except first page**
This option prints the security watermark on all pages after the first page.
 - Only on specified pages**
This option prints the security watermark on the page numbers typed in the text box.
 - Print onto front outside cover**
This option prints the security watermark on the front cover. This option is available when **Cover mode** is selected in the **Publishing** tab. If **Cover mode** and **Front outside** are both selected in the **Publishing** tab, **Print onto front outside cover** is selected automatically.

- 4 In all dialog boxes, click **OK**.

Locking the Security Watermark Settings

The administrator can ensure that a security watermark is printed on all jobs by locking the selected security watermark.

- 1 In the **Advanced** tab, select security watermark options and adjust the calibration.
- 2 Select **Device Settings > Administrator > Lock Security Settings**.
- 3 In the **Lock Security Settings** dialog box, type a 4-16 character password, and type again to confirm.
- 4 In all dialog boxes, click **OK**.

To unlock the security watermark, clear **Lock Security Settings** and type the password.

To unlock the security watermark temporarily to change settings, in **Advanced > Security Watermark**, click **Unlock** and type the password. After changing the

settings, the security watermark remains locked until it is unlocked in **Device Settings > Administrator Settings**.

Color Optimizer

Color Optimizer is a plug-in feature that lets you match a single color accurately in a print job. To install this optional component, see the *Installation* chapter. Use this feature to print a document that contains only one color besides black, such as a letterhead or company logo. The color should be solid and consistent, with no shading. **Color Optimizer** will not work in a document with multiple colors or photographs.

In the **Color Optimizer** dialog box, an eyedropper tool can be dragged into the on-screen document to select the color, or RGB values can be entered if you know them. A printed **Color Optimizer Table** lets you see 121 color variations on paper and select the desired variation. **Hue** and **Lightness** settings are adjusted in the driver according to the selected variation.

You can specify up to three custom settings that correspond to the custom settings in the **Imaging > Adjustment** feature. You can also select a **Printer profile** option.

When installed, the **Color Optimizer** button appears in the **Advanced** tab. The **Color Optimizer** button will not appear in the user interface when PDF is the selected PDL or **Black & White mode** is selected in the **Administrator Settings** dialog box. **Color Optimizer** is unavailable for the following settings:

Black & White in the **Imaging, Basic, or Quick Print** tab.

In a client / server environment.

Optimizing RGB Color for Printing

You can use **Color Optimizer** to match a single color accurately in a print job. Options selected in the **Color Optimizer** dialog box are also saved in **Imaging > Adjustment**. At any time, you can click the Info icon in the **Color Optimizer** dialog box for instructions.

- 1 Open the document containing the desired color.
- 2 From the application's **File** menu, click **Print**, then click **Preferences** or **Properties** to open the **Properties** dialog box.
- 3 Click the **Advanced** tab, and click **Color Optimizer**.
- 4 In the **Color Optimizer** dialog box, under **Color adjustment**, select **Custom 1**, **Custom 2**, or **Custom 3**.
- 5 Under **Printer profile**, select from available options.
- 6 Select a color by one of the following methods:
 - Click and drag the eyedropper tool anywhere on the screen to select the desired color.
 - If you know the RGB values of the color, type the values into the RGB boxes, or click the up or down arrow buttons to adjust the values.

The color appears in the color preview box.

- 7 Click the printer icon to print a one-page table displaying variations of the selected color. From the printed **Color Optimizer Table**, select the desired variation.
- 8 In the **Color Optimizer** dialog box, type the number of the selected variation (1–121) in the spin box next to the color preview box, or click the up or down arrow buttons to select the number.
- 9 If desired, type a description of the custom setting in the **Description** box, up to 30 characters. The description only appears in the **Color Optimizer** dialog box.
- 10 Click **OK** or **Apply** to save the settings.

Configuring Status Monitor

The **Status Monitor** displays printing system status messages in the lower right corner of the window during printing. You can start a status monitor for each supported printing system. More than one status monitor can be displayed at one time.

- 1 In the **Advanced** tab, click **Status Monitor**.
- 2 If you want the **Status Monitor** image to appear during a print job, in the **Status Monitor** dialog box, select the **Status Monitor** check box.
- 3 To view the print job status without changing the **Status Monitor** setting, click **Open Status Monitor**.
The **Status Monitor** image appears in the lower right corner of your computer screen.
- 4 Move the pointer over the **Status Monitor** image to display balloon-style status messages containing information about printing system activity and the printer port.
- 5 To display a list of options, right-click the **Status Monitor** icon in the system tray.

Hide the status monitor/Show the status monitor

Switch between hiding and showing the **Status Monitor** image.

Note: You can also hide the **Status Monitor** image by right-clicking on the image, then clicking **Hide the status monitor**, or let the **Status Monitor** close on its own after 5 minutes if there is no printing activity.

Configure

To open a web browser to display a printer Web page, click **Configure**.

Note: If your printer is connected with a USB cable, this feature cannot be used. Define settings using the operation panel of the printing system.

Preferences

To open a dialog box with options for **Status Monitor** sound notification and appearance choices, click **Preferences**.

www.kyoceramita.com

To open a Web browser to the Kyocera Mita home page, click **www.kyoceramita.com**

Exit

To close the **Status Monitor**, click **Exit**.

Setting Status Monitor Preferences

You can configure printing system alerts with accompanying sound or speech in the Status Monitor **Preferences** dialog box. You can also change the appearance of the **Status Monitor** image.

- 1** Right-click the **Status Monitor** icon in the system tray.
- 2** Click **Preferences**.
- 3** Click the **Sound Notification** tab.
- 4** Click the **Enables Event Notification** check box.
- 5** Select an event for a **Status Monitor** alert.
 - Cover open**
 - Paper jam**
 - Add paper**
 - Sleep**
 - Add toner**
 - Toner low**
 - Not connected**
 - Printing**
 - Printing completed**
- 6** In the **Sound Notification** tab you can also add sound or speech to your chosen alert.
 - To add a sound file:
 - Clear the **Use Text to speech** check box.
 - The sound file text box becomes available. Type the location of a sound file (.wav), or browse to find a file located on your computer.
 - To add speech:
 - Select **Use Text to speech**.
 - Type your preferred text in the text box. The Microsoft Text to Speech utility reads your typed text and plays it back in a spoken voice.
- 7** To change the size, placement, and transparency of the **Status Monitor** image, click the **Appearance** tab.
 - Enlarge window**
 - Select to double the size of the **Status Monitor** image and text balloons.

Always on top

Select to make the **Status Monitor** always appear on top of other open windows.

Transparency

This option adjusts the **Status Monitor** to let a variable amount of background show through the image. Type a value from zero to fifty in the box. Higher values create greater transparency. A zero value creates a completely opaque image.

- 8 In the **Preferences** dialog box, click **Apply** to save your settings, click **OK** to save your settings and close the dialog box, or click **Cancel** to close the dialog box without saving any settings.

EMF Spooling

EMF (Enhanced MetaFile) is a spool file format used in printing by the Microsoft Windows operating system. When a print job is sent from an application, it is transferred to the spool file. The application writes to and the printer driver reads from the spool file simultaneously. For multiple or large documents, this quickly returns application control to the user while the printer is still printing the document.

To print with EMF spooling, in the **Advanced** tab select the **EMF Spooling** check box. Continue the printing process as usual.

Note: EMF spooling is not available when **Allow data passthrough** is selected in the **KPDL Settings** dialog box.

Enabling Client Profile

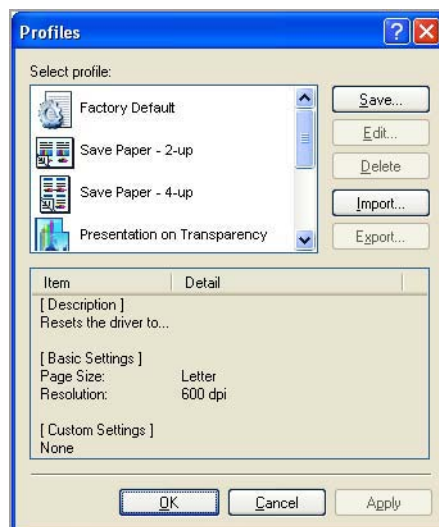
Client profile refers to profile settings saved on a server and accessed by clients in a client/server environment. This feature in the **Advanced** tab enables an administrator to control and distribute profiles on a server. You would still have the choice to use your local profiles or the server profiles. This function is intended for use on the client side (PC side) in a client-server environment.

Clear the **Enable client profile** check box to select profiles from the server to apply to print jobs created by the driver. Server profiles are read-only.

Select the **Enable client profile** check box for using custom profiles locally in the driver.

10 Profiles

In **Profiles**, you can save printer driver settings as a profile. You can select multiple options in the **Quick Print** tab and **Printing Preferences**, save them to a profile, and use all of them at once when you apply the profile. A maximum of 26 profiles can be established in one driver, including the **Factory Default** profile. Device options settings made in the **Device Settings** tab cannot be saved to a profile.



Saving a Profile

The **Save** button lets you create your own profiles. You can select the printing options you want in the driver, then save the driver settings including your customizations as a profile. You can then use that profile to print the same type of print job again without having to reselect all the settings. In **Printing Preferences**, the **Profiles** button appears at the bottom of all the tabs.

- 1 Set the printing options you want for your print job by opening **Printing Preferences** and selecting all your driver settings.
- 2 Click **Profiles > Save**.
- 3 To identify the profile, type a **Name**, select an **Icon**, and type a **Description**.
- 4 Click **OK** to save the profile.

The newly added profile appears in the **Profiles** dialog box.

- 5 Click **Apply** to activate the selected profile to the current print job, or click **OK** to save the profile.

Note: To reset the printer driver to default settings, select the **Factory Default** profile, and click **Apply**. This clears the settings of a selected profile.

Editing a Profile

The **Edit** button lets you make changes to an existing profile. The **Factory Default** profile cannot be edited.

- 1 Click **Profiles**.
- 2 In the **Select profile** section, highlight the profile to be edited, and click **Edit**.
- 3 Any of the three options can be edited: name, icon and description. Click **OK** to save the edited changes.
The newly edited profile appears in the **Profiles** dialog box.
- 4 Click **Apply** to activate the selected profile to the current print job, or click **OK** to save the profile.

Deleting a Profile

The **Delete** button lets you remove an existing profile. The **Factory Default** profile cannot be deleted.

- 1 Click **Profiles**.
- 2 In the **Select profile** section, highlight the profile to be deleted, and click **Delete**.
- 3 A message appears confirming the removal of the profile. Click **Yes** to remove.
- 4 Click **OK** to close the **Profile** dialog box.

Importing a Profile

The **Import** button lets you import a copy of a profile from other printer drivers into your printer driver.

- 1 Click **Profiles > Import**.
- 2 Browse for the existing profile (.KXP), select it, and click **Open**.
A message appears if any of the profile settings in the imported file are not available in the existing driver. Select **Yes**, to import the profile, or **No**, to cancel the import.

- 3 If you selected **Yes** in the previous step, the newly imported file appears in the **Profile** dialog box.
- 4 Click **Apply** to activate the selected profile to the current print job, or click **OK** to save the profile.

Exporting a Profile

The **Export** button lets you export a copy of a profile from your printer driver for use in other printer drivers. The **Factory Default** profile cannot be exported.

- 1 Click **Profiles**.
- 2 In the **Select profile** section, highlight the profile to be exported, and click **Export**.
- 3 The **Export Profile** dialog box appears. Name and save the profile.
- 4 Click **OK** to close the **Profiles** dialog box.

Glossary

A **Access code** A four-digit code that you must enter at the printing system's operation panel to print a Private Print job. An access code can also be used with the Job storage feature.

Auto configure Device settings feature that queries a printing system through the network and automatically retrieves settings for optional devices, memory, and RAM disk. Driver settings will be updated with information received from the physical printing system. Installed devices will be displayed in the Preview image.

B **Black & white** With this option selected, the printer creates documents with black toner only. This feature is available in the Imaging, Quick Print, and Basic tabs.

Black & White mode An Administrator Settings option to constrain all color settings in the driver and print with black toner only.

Booklet Layout feature that prints a multi-page document in a booklet format by using a duplex unit. Two pages are printed on each side of a sheet to create a document that can be read like a book.

C **Cassette** A removable plastic tray that holds a supply of paper for input to the printer.

Color optimizer Advanced tab plug-in feature that accurately matches a single color in a print job. The documents for printing can contain only one color besides black, such as a letterhead or a company logo. Color Optimizer does not work for a document with multiple colors or photographs.

Color page count Automatically tallies the number of color and black and white pages in each print job for billing or accounting purposes.

Continuous tone Imaging feature that represents images, or photographs in a series of evenly graduated tones.

Custom box Job option that stores print jobs in the printing system's memory for later printing from the operation panel. Custom box jobs are saved to boxes that are assigned to users, and can be restricted by password. Your printing system must have an installed hard disk to use this feature. 100 Custom boxes are set up on the printing system's hard disk at installation. The maximum number of Custom boxes is 1000.

D **Don't use application name** Don't use application name is an option to shorten the application defined job name for jobs created in Microsoft Word or PowerPoint. The file name will appear clearly in the job list.

E **EcoPrint** Imaging feature that changes toner saturation, making the entire image, text and graphics, appear lighter in the printed job. The actual amount of toner used depends on the printing system mode and the type of data printed (text, graphics, or both). EcoPrint does not increase print speed. This feature is also available in the Quick Print and Basic tabs

e-MPS Job storage (e-MPS) is a set of options for saving print jobs in printing system memory, so that you can print or reprint them later. Print jobs can easily be reprinted later from the printing system's operation panel, and printing of sensitive documents can be restricted to approved users.

F **Fast printing** Printing mode that decreases spool size and increases print speed.

G **GDI compatible mode** A page description language option that accurately reproduces what is viewed on the screen using the Microsoft Graphical Device Interface (GDI) component to render the document. It generates data in a raster printing format, creating a larger printable file.

Gutter Blank space on the left side or top of a printed page that can be increased by scaling down text and graphics. This supports stapling and hole punching. When used with Duplex printing, the enlarged blank space lines up evenly on both sides of the sheet. The larger blank space is created by shifting the printable area to the right or down as much as one inch (25.4 mm).

J **Job accounting** An accounting system that records and controls the number of pages printed by each account ID. Account IDs can be assigned at the printing system and stored in the driver. After account IDs are assigned, you can use the Job accounting option to print in the Job accounting mode.

Job storage Job option that stores a print job permanently on a hard disk for printing later. You also have the option of protecting the print job from unauthorized printing by using an access code. This feature is available when a hard disk is installed and selected in the Device Settings tab.

M **MP tray** Source tray used for labels, transparencies, envelopes, and custom printing media.

O **Operation panel** The keys and display on the printing system. Use the operation panel to set options such as media type and EcoPrint, and to print jobs stored on the hard disk.

P **PDF** The Adobe portable document format (PDF) is independent of the application software, hardware, and operating system used to create documents, and also of the output device on which they are displayed or printed.

PDL Page Description Language. This is the language used by your computer to tell the printing device how to print a document. Availability of some printing options depends on the selected PDL.

Plug-in An accessory program that integrates with the printer driver to enhance or extend the driver's capabilities.

Poster Layout feature for printing a document in a larger size than the maximum supported by the printer so the cumulative sheets can be assembled as a poster. Use this feature to print a document in a large, eye-catching poster format, up to 25 times larger than the original document size.

PRESCRIBE An internal printer language that embeds commands into specified locations in a print job.

Print graphics as black This option prints all color graphics and text with black, rather than grayscale. This feature is intended for CAD applications.

Print text as black Prints all color text as black. It produces faster printing of color print jobs by reducing the amount of data sent to the printer. In black and white printing, it increases the detail for light-colored text printed. White text and image colors are unaffected.

Private print Job option that saves print jobs on the hard disk for printing until a four-digit access code is entered. Private print jobs are deleted when the printing system is reset or turned off.

Profile A set of user defined driver settings that are saved as a group. Once saved, you can select a profile by name and apply its settings to a print job without selecting each feature individually.

Prologue/Epilogue Advanced feature that allows you to insert a macro into specific locations in the print job. An advanced user may choose to use this feature to embed a PRESCRIBE command that will call a macro to overlay PRESCRIBE form data or a graphic object, such as a logo or a signature, at a specific point in the print job.

Proof and hold Job option that prints one copy of a print job so that you can proof it before printing the remaining copies. This feature is available when a hard disk is installed and selected in the Device Settings tab. After the proof copy is printed and checked, remaining copies can be printed from the printing system's operation panel without sending the job again from the computer.

Q

Quick copy Job option that prints all copies of a print job and stores the job temporarily on a hard disk for reprinting later. This feature is available when a hard disk is installed and selected in the Device Settings tab.

Quick Print tab The Quick Print tab improves usability by providing an easier way to set print options. You can choose basic settings or a predefined printer profile, rather than having to go to various tabs. Quick Print settings can be captured in a group called a profile. Profiles support common printing tasks, saving you from having to repeatedly select the same settings. The Administrator can set the view of the Quick Print tab through the Installation process, or Administrator Settings in Properties.

R

RAM disk A feature that lets you set up an area within the printing system memory as a virtual hard disk for faster printing. RAM disk is not an attached device, but an allocation of existing printing system memory. RAM disk is temporary. All data sent to RAM disk memory will be lost when the printing system is reset or turned off.

S

Security Watermark Plug-in feature that adds watermark text and a background pattern to a print job. The text blends into the background pattern making it nearly invisible when printed. The security watermark appears only when the printed page is photocopied. A security watermark can be used to help protect against unauthorized reproduction of documents, or simply to differentiate original documents from photocopies.

SNMP Simple Network Management Protocol. The standard TCP/IP protocol for managing IP network devices, including printing devices. SNMP settings determine the level of security when using the Auto Configure feature, and prevent unauthorized printing to the SNMPv3 printing device. SNMP settings must be set in the

Administrator settings in the Device Settings tab, and in the printing system's Command Center.

Status monitor Optional feature that displays printing system status messages in the lower right corner of the window during printing. You can customize the appearance of the status monitor, and determine what messages are displayed and how by selecting preferences and notifications.

T

Transparency A clear plastic, page-sized sheet used as a printing medium.

Transparency interleaving Publishing feature that inserts a backing sheet between printed transparencies. The backing sheet, also known as an interleaf, helps keep transparencies clean and prevents them from clinging together.

W

Watermark The Watermark feature is available in the Advanced tab. A watermark is a recognizable image or pattern that can be placed on a page or throughout a document. You can choose one of the standard watermarks or create your own text.

KYOCERA MITA AMERICA, INC.

Headquarters:

225 Sand Road
Fairfield, New Jersey 07004-0008
Telephone: (973) 808-8444
Fax: (973) 882-6000

New York Branch:

1410 Broadway, 23rd Floor
New York, NY 10018
Telephone: (917) 286-5400
Fax: (917) 286-5402

Northeastern Region:

225 Sand Road
Fairfield, New Jersey 07004-0008
Telephone: (973) 808-8444
Fax: (973) 882-4401

Midwestern Region:

201 Hansen Court, Ste 119
Wood Dale, Illinois 60191
Telephone: (630) 238-9982
Fax: (630) 238-9487

Western Region:

14101 Alton Parkway
Irvine, CA 92618-7006
Telephone: (949) 457-9000
Fax: (949) 457-9119

KYOCERA MITA CANADA, LTD.

6120 Kestrel Road, Mississauga,
Ontario L5T 1S8, Canada
Telephone: (905) 670-4425
Fax: (905) 670-8116

KYOCERA MITA AMERICA MEXICO, S.A. DE C.V.

Av. 16 de Septiembre #407
Col. Santa Inés
Azcapotzalco México,
D.F. 02130, México
Telephone: (55) 5383-2741
Fax: (55) 5383-7804

Southeastern Region:

1500 Oakbrook Drive
Norcross, Georgia 30093
Telephone: (770) 729-9786
Fax: (770) 729-9873

Southwestern Region:

2825 West Story Road
Irving, Texas 75038-5299
Telephone: (972) 550-8987
Fax: (972) 252-9786

National Operation Center & National Training Center:

2825 West Story Road
Irving, Texas 75038-5299
Telephone: (972) 659-0055
Fax: (972) 570-5816

Latin America Division:

8240 NW 52nd
Terrace Dawson Building, Suite 108
Miami, Florida 33166-7766
Telephone: (305) 421-6640
Fax: (305) 421-6666

KYOCERA MITA EUROPE B.V.

Hacksteen 40, 2132 MS Hoofddorp
The Netherlands
Telephone: +31.20.654.0000
Home page: <http://www.kyoceramita-europe.com>
Email: Info@kyoceramita-europe.com

Kyocera Mita Nederland B.V.
Beechavenue 25, 1119RA Schiphol-Rijk
The Netherlands
Telephone: +31.20.58.77.200

Kyocera Mita (UK) LTD
8 Beacontree Plaza
Gillette Way Reading Berks RG2 0BS
U.K.
Telephone: +44.1189.311.500

Kyocera Mita Italia S.p.A.
Via G. Verdi, 89/91, 20063 Cernusco s/N
Milano, Italy
Telephone: +39.02.92179.1

S.A. Kyocera Mita Belgium N.V.
Hermesstraat 8A, 1930 Zaventem
Belgium
Telephone: +32.2.720.9270

Kyocera Mita France S.A.
Parc Les Algorithmes Saint Aubin
91194 GIF-SUR-YVETTE
France
Telephone: +33.1.6985.2600

Kyocera Mita España, S.A.
Edificio Kyocera, Avda de Manacor No. 2
28290 Las Matas (Madrid)
Spain
Telephone: +34.91.631.8392

Kyocera Mita Finland OY
Atomitie 5C, 00370 Helsinki
Finland
Telephone: +358.9.4780.5200

Kyocera Mita (Schweiz)
Hohlstrasse 614, 8048 Zürich
Switzerland
Telephone: +41.1.908.4949

Kyocera Mita Deutschland GMBH
Otto-Hahn-Str. 12, D-40670 Meerbusch,
Germany
Telephone: +49.2159.918.0

Kyocera Mita GMBH Austria
Eduard-Kittenberger-Gasse 95,
1230 Wein
Austria
Telephone: +43.1.86338.210

Kyocera Mita Svenska AB
Esbogatan 16B 164 75 Kista
Sweden
Telephone: +46.8.546.55000

Kyocera Mita Norge
Postboks 150 Oppsal, NO 0619 Oslo
Olaf Helsetsvai 6, NO 0694 Oslo,
Norway
Telephone: +47.22.62.73.00

Kyocera Mita Danmark A/S
Ejby Industrivej 1, DK-2600 Glostrup
Denmark
Telephone: +45.5687.1100

Kyocera Mita Portugal, IDA.
Rua do Centro Cultural, 41 (Alvalade) 1700-106
Lisbon,
Portugal
Telephone: +351.21.842.9100

Kyocera Mita South Africa (PTY) LTD.
527 Kyalami Boulevard
Kyalami Business Park Midrand
South Africa
Telephone: +27.(0) 11.540.2600

KYOCERA MITA Corporation

Headquarters:

2-28, 1-chome, Tamatsukuri, Chuo-ku
Osaka 540-8585, Japan
Telephone: (06) 6764-3555
<http://www.kyoceramita.com>

Kyocera Mita Australia Pty, LTD.
Level 3, 6-10 Talavera Road, North Ryde,
N.S.W. 2113 Australia
Telephone: (02) 9888.9999

Kyocera Mita New Zealand LTD.
1-3 Parkhead Place, Albany
P.O. BOX 302 125 NHPC
Auckland, New Zealand
Telephone: (09) 415.4517

Kyocera Mita (Thailand) Corp., LTD.
9/209 Ratchada-Prachachem Road
Bang Sue, Bangkok 10800, Thailand
Telephone: (02) 586.0320

Kyocera Mita Singapore PTE, LTD.
121 Genting Lane, 3rd Level
Singapore 349572
Telephone: 67418733

Kyocera Mita Hong Kong, LTD.
11/F., Mita Centre
552-566, Castle Peak Road
Tsuen Wan, New Territories,
Hong Kong
Telephone: 24297422

Kyocera Mita Taiwan Corporation
7F-1~2, No. 41, Lane 221, Gangchi Rd.
Neihu District, Taipei, Taiwan, 114, R.O.C.
Telephone: (02) 87511560
